

# Construction Report no.1



The timbers (pine and zelkova) used in Sakuragomon were inspected.



Round timber used as beam and others.(pine)



Square dressed timbers used as column and foundation, etc. (pine)



Main column (zelkova)

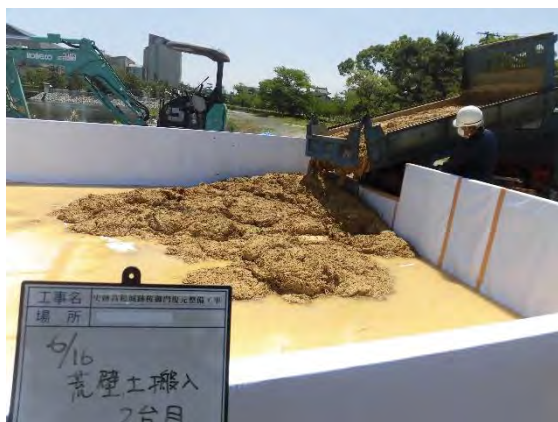


Main column (zelkova)

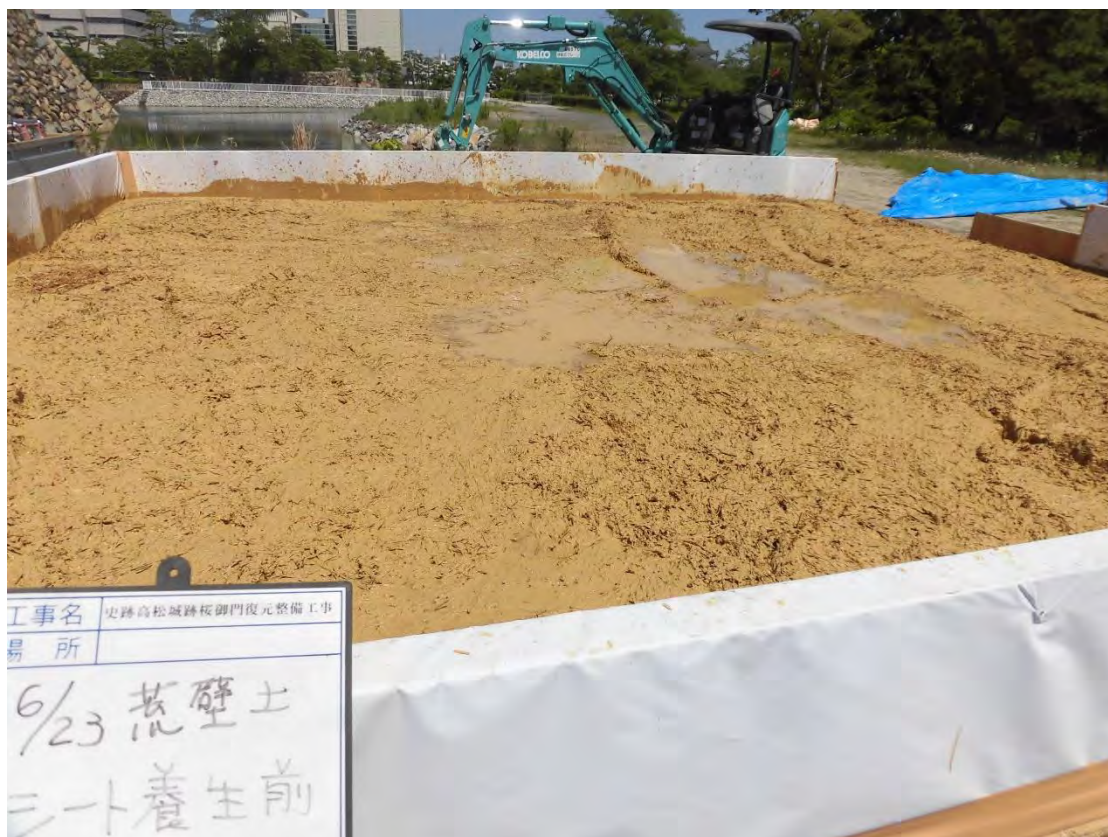
# Construction Report no.1



Production site of wall clay used as wall base coat was set up.



Wall clay is brought in, supplemented with additional crack prevention material and is being mixing.



Mixing completed. Will be mixed repeatedly several times till actual used to improve durability of wall clay