



Corporate Information

Today's Work, Tomorrow's Heritage



A Brief Outline

- Lines of business
- 1 Contracting for building, civil engineering, machinery and other construction works;
 - 2 Research, planning, study, evaluation, diagnosis, soil analysis, surveying, design, supervision, management and consulting in connection with construction works;
 - 3 Research, planning, design, supervision, management and consulting in connection with regional development, urban development, ocean development, space development, resources and energy development, and environment improvement;
 - 4 Purchase, sale, letting, brokerage, management, appraisal and consulting of real estate;
 - 5 Construction, sale, letting and caretaking of residential houses and other kinds of buildings and development and sale of land;
 - 6 Second financial instruments business, investment advisory and agency business under the Financial Instruments and Exchange Law and business under the Real Estate Specific Joint Enterprise Law;
 - 7 Planning, construction, possession, maintenance and operation of public and quasi- public facilities such as municipal and government office buildings, educational and cultural facilities, medical and welfare facilities, roads, harbors, airports, parks, water supply and sewerage facilities and the like;
 - 8 Generation of electrical power and supply of energy such as electricity, heat and the like, and the transfer of emission rights of gases having global warming effect, and consulting in connection therewith;
 - 9 Cultivation of agricultural produce, forestry, cultivation of seafood; processing and sale of products from said operations and management of facilities said operations; and consulting work the above;
 - 10 Undertaking of soil analysis and purification work, collection, disposition, disposal, and reutilization of waste, and consulting therewith;
 - 11 Design, installation, sale, lease, maintenance and consulting of information communication systems, building operation systems;
 - 12 Maintenance and upkeep, security and cleaning of buildings, equipment and machinery;
 - 13 Design, manufacturing, sale, lease and brokerage of construction machinery, construction equipment, mechanical equipment, concrete products for construction, construction materials, wooden fittings for buildings, furniture, decorative wooden interior and wood products;
 - 14 Sales and lease of motor vehicles, office and communication equipment;
 - 15 Acquisition, licensing and sale of industrial property, copyrights, know-how and computer software;
 - 16 Management and consulting of sporting facilities, amusement parks, hotels, restaurants and resort facilities;
 - 17 Sales of pharmaceuticals, medical care materials, medical devices, management and consulting of long-term care facilities, and home nursing care for elderly;
 - 18 Planning, production and sales of advertisements, publications, printing, images of media, and planning, operation and consulting of business events;
 - 19 Transportation, and the management of warehouses and distribution centers;
 - 20 Agency for non-life insurance, agency for life insurance, travel agency and manpower supply agency;
 - 21 Financial business such as loans, guarantees and factoring;
 - 22 Investment and stock investment in business related to the preceding items;
 - 23 Overseas operations in connection with any of the preceding items;
 - 24 Any and all business related to or associated with any of the preceding items.

Paid-in Capital ¥74,365 million (US\$498,326 thousand)
(US\$1=¥149.23/Year ended March 31, 2025)

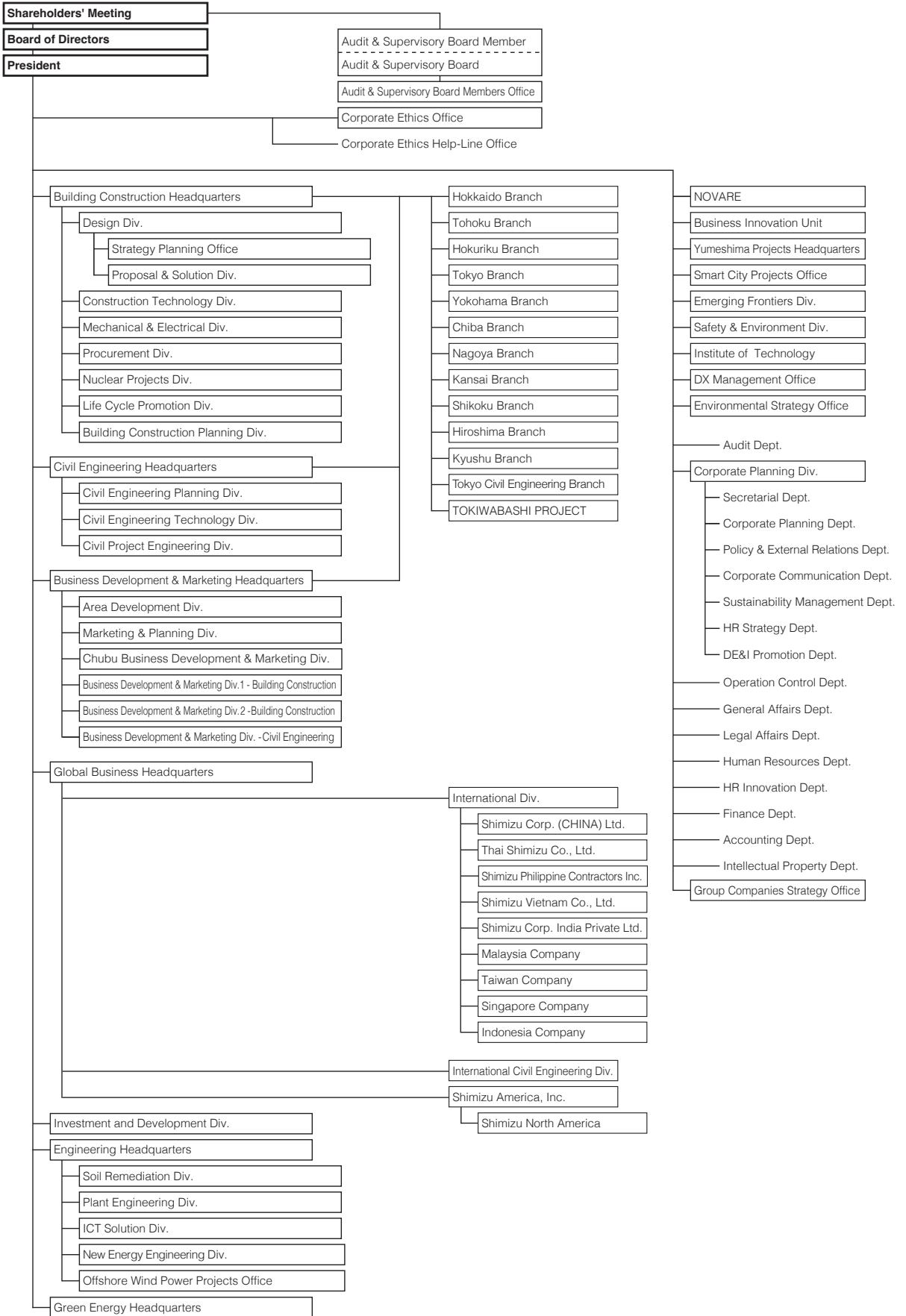
Annual Sales ¥1,944,360 million (US\$13,029,288 thousand)
(US\$1=¥149.23/Year ended March 31, 2025)

Total Employees 11,163
(As of March 31, 2025)

Doctors of Engineering, Physical Science & Other Subjects	171
Consultant Engineers	812
Licensed First-class Architects	2,014
Licensed First-class Civil Engineers	1,465

The number of consolidated employees is 21,286.

Corporate Organization



Management

Board of Directors

Chairman of the Board and Representative Director

Kazuyuki Inoue

President and Representative Director

Tatsuya Shimmura

Executive Vice President and Representative Director

Kentaro Ikeda

Executive Vice President and Director

Takeshi Sekiguchi

Executive Vice President and Representative Directors

Yoshito Tsutsumi

Directors

Noriaki Shimizu

Tamotsu Iwamoto

Junichi Kawada

Mayumi Tamura

Yumiko Jozuka

Note: President and Representative Director Tatsuya Shimmura, Executive Vice President and Representative Director Kentaro Ikeda, Executive Vice President and Director Takeshi Sekiguchi, Executive Vice President and Representative Director Yoshito Tsutsumi, concurrently serve as an Executive Officer. Director Noriaki Shimizu is a Non-Executive Director and head of the Nomination and Compensation Committee. Directors Tamotsu Iwamoto, Junichi Kawada, Mayumi Tamura and Yumiko Jozuka are outside directors.

Executive Officers

President

Tatsuya Shimmura

Executive Vice Presidents

Kentaro Ikeda

Takeshi Sekiguchi

Yoshito Tsutsumi

Takao Haneda

Takefumi Saito

Senior Managing Officers

Kouichi Yamashita

Kojiro Shimizu

Mitsuo Morii

Hideo Yokoyama

Hitoshi Fujita

Tomoaki Harada

Hiroyuki Fujimoto

Mika Kaneko

Managing Officers

Akinobu Sakao

Toshiyuki Nakahara

Kazuya Osako

Naruki Ohashi

Shuji Kakegawa

Takuya Ito

Michiho Yamaguchi

Yutaka Shimizu

Naoki Iwagaki

Shunsuke Oka

Executive Officers

Kazuyuki Oki

Hideyuki Tominaga

Junichiro Kakuno

Osamu Nakagawa

Katsuyoshi Yuhara

Yasuhiro Takenaka

Osamu Shibato

Takayuki Himono

Eiichi Shinma

Mohi U.Ahmed

Nobuyoshi Kikuchi

Kentaro Nakagawa

Kazumi Sato

Toru Aoki

Kazu Miyata

Takayuki Kawasaki

Kounari Yotsumoto

Taizo Tsukada

Hiroaki Oda

Ichiro Nokubo

Yasuhide Yamada

Hideki Umeyama

Kouichi Toukai

Hideo Fujisawa

Masanobu Sakamoto

Hiroshi Shimizu

Kazuhiko Akagi

Isao Miyamori

Tomoko Odaira

Audit & Supervisory Board Members

Hiroshi Kobayashi

Tomohiko Hirayama

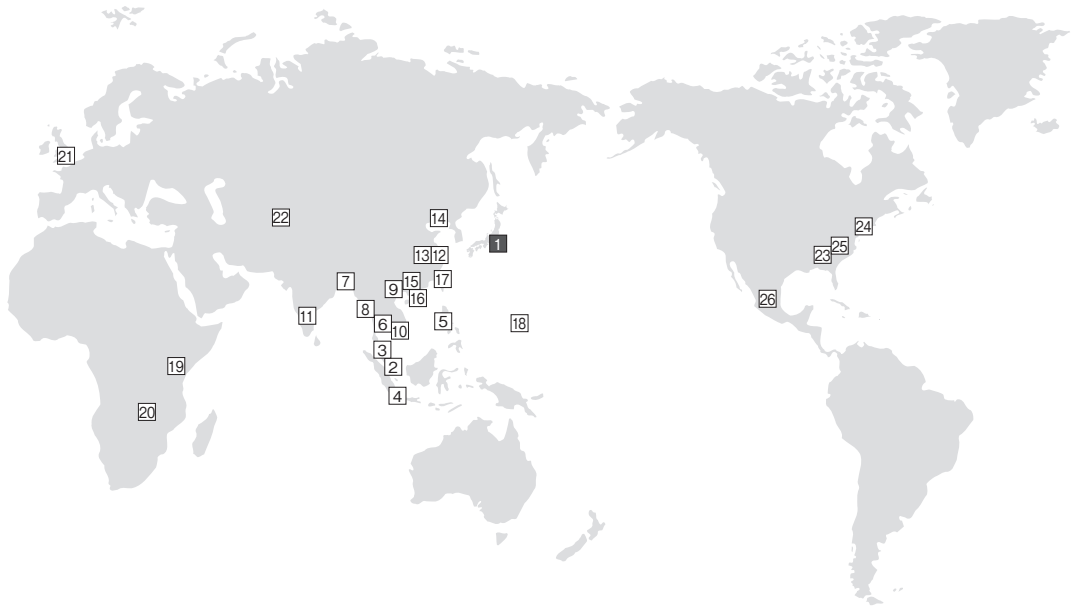
Kaoru Ishikawa

Toshie Ikenaga

Ko Shikata

Note: Audit & Supervisory Board Members Kaoru Ishikawa, Toshie Ikenaga and Ko Shikata are outside auditors.

International Business Network



- | | | | |
|--------------------------|---------------------|--------------|--------------|
| 1 Tokyo
(Head Office) | 8 Yangon | 16 Hong Kong | 24 New York |
| 2 Singapore | 9 Hanoi | 17 Taipei | 25 Charlotte |
| 3 Kuala Lumpur | 10 Ho Chi Minh City | 18 Guam | 26 Querétaro |
| 4 Jakarta | 11 Bengaluru | 19 Nairobi | |
| 5 Manila | 12 Shanghai | 20 Lusaka | |
| 6 Bangkok | 13 Suzhou | 21 London | |
| 7 Dhaka | 14 Dalian | 22 Tashkent | |
| | 15 Guangzhou | 23 Atlanta | |

Domestic Offices

Shimizu Corporation Head Office
 No.16-1 Kyobashi 2-chome, Chuo-ku, Tokyo 104-8370,
 Japan
 Phone: 81-3-3561-1111 <https://www.shimz.co.jp/en/>

Branches

Tokyo, Yokohama, Chiba, Osaka, Takamatsu, Sapporo,
 Sendai, Kanazawa, Nagoya, Hiroshima, Fukuoka

Local Offices (69 locations)

Asia

Singapore

● Shimizu Corporation
 ■ Shimizu Investment (Asia) Pte. Ltd.
 ■ Shimizu International Capital (Singapore) Pte. Ltd.
 8 Kallang Avenue #05-05, Aperia Tower 1, Singapore 339509
 Phone: 65-6220-0406

Kuala Lumpur

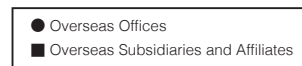
● Shimizu Corporation
 12-3, 12th Floor, Faber Imperial Court, Jalan Sultan Ismail,
 50250 Kuala Lumpur, Malaysia
 Phone: 60-3-2070-0000 Facsimile: 60-3-2072-0222

Jakarta

● Shimizu Corporation
 ■ PT Shimizu Bangun Cipta Kontraktor
 Trinity Tower 51st Fl. Suite 07, 08, 09, 10, 15 dan 16, Jl. H.R.
 Rasuna Said Kav. C22 Blok IIB, Kec. Setiabudi, Kel. Karet
 Kuningan, Jakarta 12940, Indonesia
 Phone: 62-21-2526-901 Facsimile: 62-21-2526-906

Manila

● Shimizu Corporation
 ■ Shimizu Philippine Contractors, Inc.
 5th Floor, King's Court Building I, 2129 Chino Roces
 Avenue, Makati, Metro Manila, Philippines
 Phone: 63-2-8811-2981 Facsimile: 63-2-8811-2985



Bangkok

- Shimizu Corporation
- Thai Shimizu Co., Ltd.

Unit 2301, 23rd Floor, Empire Tower, 1 South Sathorn Road, Yannawa, Sathorn, Bangkok 10120, Thailand
Phone: 66-2-230-0333 Facsimile: 66-2-230-0303

Dhaka

- Shimizu Corporation

Concord I-K Tower (5th Floor), Plot No. 2, Block CEN(A), North Avenue, Gulshan-2, Dhaka-1212, Bangladesh
Phone: 880-2-5505-2034 Facsimile: 880-2-5505-2036

Yangon

- Shimizu Corporation

No.16-1 Kyobashi 2-chome, Chuo-ku, Tokyo 104-8370, Japan (Global Business Headquarters)
Phone: 81-3-3561-1111

Hanoi

- Shimizu Corporation
- Shimizu Vietnam Co., Ltd.

3rd Floor, Lang Ha Building, 14 Lang Ha, Giang Vo Ward, Hanoi, Vietnam
Phone: 84-24-3772-0500 Facsimile: 84-24-3772-3570

Ho Chi Minh City

- Shimizu Corporation
- Shimizu Vietnam Co., Ltd.

4th Floor, The Landmark, 5B Ton Duc Thang, Sai Gon Ward, Ho Chi Minh City, Vietnam
Phone: 84-28-3824-1807 Facsimile: 84-28-3824-1809

Bengaluru

- Shimizu Corporation
- Shimizu Corporation India Pvt. Ltd.

No.74, 4th Floor, Unit 402, "Prestige Feroze" Building, Cunningham Road, Vasanth Nagar, Bengaluru, 560052, India
Phone: 91-80-4356-7777

Shanghai

- Shimizu Corporation
- Shimizu Corporation (China) Ltd.

Room 2001, No. 4, Lane 255, Dongyu Rd, Pudong District, Shanghai 200126, China
Phone: 86-21-62708800 Facsimile: 86-21-62706600

Suzhou

- Shimizu Corporation (China) Ltd.

Room 2004, Bldg 13, Suzhou Longhuzhongxin, No. 79, Jinshan East Rd., Huqiu District, Suzhou, Jiangsu, China
Phone: 86-512-6272-6070

Dalian

- Shimizu Corporation (China) Ltd.

c/o Inn Fine Hotel Room 700, 135 Jinma Road, Dalian Economic & Technical Development Zone, Dalian 116600, China
Phone: 86-411-8761-5125/5134

Guangzhou

- Shimizu Corporation (China) Ltd.

Room A05, 25th Floor, Sunrich Plaza, No. 988 Guangzhou Avenue Middle, Tianhe District, Guangzhou City, 510620, China
Phone: 86-20-8527-7160

Hong Kong

- Shimizu Corporation
- Shimizu Hong Kong Company Ltd.

Room 4313-4322, Metroplaza, Tower 1, No. 223 Hing Fong Road, Kwai Fong, N.T. Hong Kong, China
Phone: 852-2582-6888 Facsimile: 852-2827-1918

Taipei

- Shimizu Corporation

7F-2, No.111, Song Jiang Rd., Zhongshan District, Taipei, 104-86, Taiwan
Phone: 886-2-2517-6580 Facsimile: 886-2-2516-0650

Oceania

Guam

- Shimizu Corporation

Unit 205 Baltej Pavilion, 415 Chalan San Antonio, Tamuning, Guam, 96913
Phone: 1-671-969-1356

Africa

Nairobi

- Shimizu Corporation

Britam Tower, Hospital Road, Upper Hill, Nairobi, Kenya
Phone: 254-11-105-2670

Lusaka

- Shimizu Corporation

Sunshare Tower 1st floor, Katima Mulilo Road, Lusaka, Zambia
Phone: 254-11-105-2670 (Nairobi)

Europe

London

- Shimizu Corporation

91 Wimpole Street, Marylebone, London W1G 0EF, United Kingdom
Phone: 44-20-3908-5947

Tashkent

- Shimizu Corporation

App.#1, House #6, Khadra Avenue, Shaykhontohur District, Tashkent City, 100000, Republic of Uzbekistan
Phone: 81-3-3561-1111

North America

Atlanta

- Shimizu America, Inc.
- Shimizu North America LLC

2100 Riveredge Parkway, Suite 1100, Atlanta, GA, 30328, USA
Phone: 1-770-956-1123 Facsimile: 1-770-956-7575

New York

- Shimizu Corporation
- Shimizu North America LLC
- Shimizu International Finance (U.S.A), Inc.
- Shimizu Realty Development (U.S.A), Inc.

155 East 56th street, 4th Floor, New York, NY 10022, U.S.A.
Phone: 1-212-223-7757 Facsimile: 1-212-223-1930

Charlotte

- Perigon International, Inc.

3430 Toringdon Way, Suite 110, Charlotte, NC 28277, U.S.A.
Phone: 1-704-246-2000

Querétaro, Mexico

- Shimizu North America LLC Mexico Branch

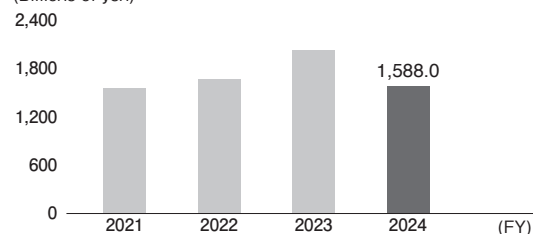
Av. Tecnológico Norte #950-B, Piso 15-A, Corporativo Blanco, Col. San Pablo, Querétaro, Qro. C.P.76125 MEXICO
Phone: 52-442-189-4160

Business Results (Consolidated)

Construction business (orders)

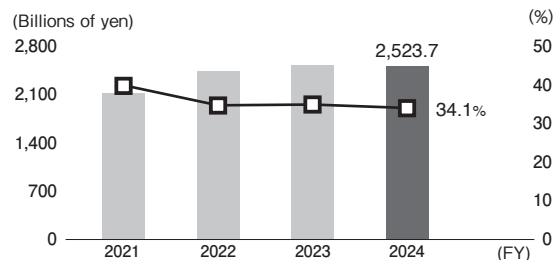
¥1,588.0 billion

(Billions of yen)



Total assets/Equity ratio

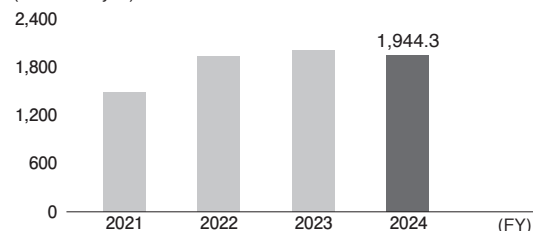
Total assets **¥2,523.7** billion Equity ratio **34.1** %



Net sales

¥1,944.3 billion

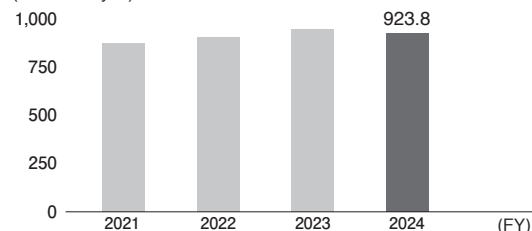
(Billions of yen)



Net assets

¥923.8 billion

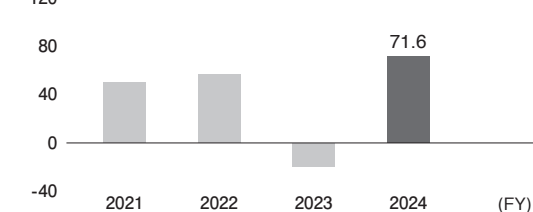
(Billions of yen)



Ordinary income

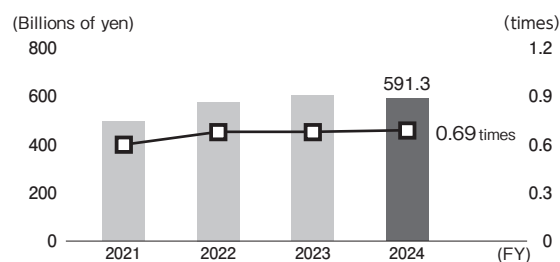
¥71.6 billion

(Billions of yen)



Balance of interest-bearing debt and debt to equity ratio

Interest-bearing debt **¥591.3** billion Debt to equity ratio **0.69** times



Net income attributable to shareholders of the corporation/ROE

Net income **¥66.0** billion ROE **7.6** %

(Billions of yen)

