



## Corporate Information

Today's Work, Tomorrow's Heritage



## A Brief Outline

- Lines of business
- 1 Contracting for building, civil engineering, machinery and other construction works;
  - 2 Research, planning, study, evaluation, diagnosis, soil analysis, surveying, design, supervision, management and consulting in connection with construction works;
  - 3 Research, planning, design, supervision, management and consulting in connection with regional development, urban development, ocean development, space development, resources and energy development, and environment improvement;
  - 4 Purchase, sale, letting, brokerage, management, appraisal and consulting of real estate;
  - 5 Construction, sale, letting and caretaking of residential houses and other kinds of buildings and development and sale of land;
  - 6 Second financial instruments business, investment advisory and agency business under the Financial Instruments and Exchange Law and business under the Real Estate Specific Joint Enterprise Law;
  - 7 Planning, construction, possession, maintenance and operation of public and quasi- public facilities such as municipal and government office buildings, educational and cultural facilities, medical and welfare facilities, roads, harbors, airports, parks, water supply and sewerage facilities and the like;
  - 8 Generation of electrical power and supply of energy such as electricity, heat and the like, and the transfer of emission rights of gases having global warming effect, and consulting in connection therewith;
  - 9 Cultivation of agricultural produce, forestry, cultivation of seafood; processing and sale of products from said operations and management of facilities said operations; and consulting work the above;
  - 10 Undertaking of soil analysis and purification work, collection, disposition, disposal, and reutilization of waste, and consulting therewith;
  - 11 Design, installation, sale, lease, maintenance and consulting of information communication systems, building operation systems;
  - 12 Maintenance and upkeep, security and cleaning of buildings, equipment and machinery;
  - 13 Design, manufacturing, sale, lease and brokerage of construction machinery, construction equipment, mechanical equipment, concrete products for construction, construction materials, wooden fittings for buildings, furniture, decorative wooden interior and wood products;
  - 14 Sales and lease of motor vehicles, office and communication equipment;
  - 15 Acquisition, licensing and sale of industrial property, copyrights, know-how and computer software;
  - 16 Management and consulting of sporting facilities, amusement parks, hotels, restaurants and resort facilities;
  - 17 Sales of pharmaceuticals, medical care materials, medical devices, management and consulting of long-term care facilities, and home nursing care for elderly;
  - 18 Planning, production and sales of advertisements, publications, printing, images of media, and planning, operation and consulting of business events;
  - 19 Transportation, and the management of warehouses and distribution centers;
  - 20 Agency for non-life insurance, agency for life insurance, travel agency and manpower supply agency;
  - 21 Financial business such as loans, guarantees and factoring;
  - 22 Investment and stock investment in business related to the preceding items;
  - 23 Overseas operations in connection with any of the preceding items;
  - 24 Any and all business related to or associated with any of the preceding items.

Paid-in Capital ¥74,365 million (US\$490,924 thousand)  
(US\$1=¥151.48/Year ended March 31, 2024)

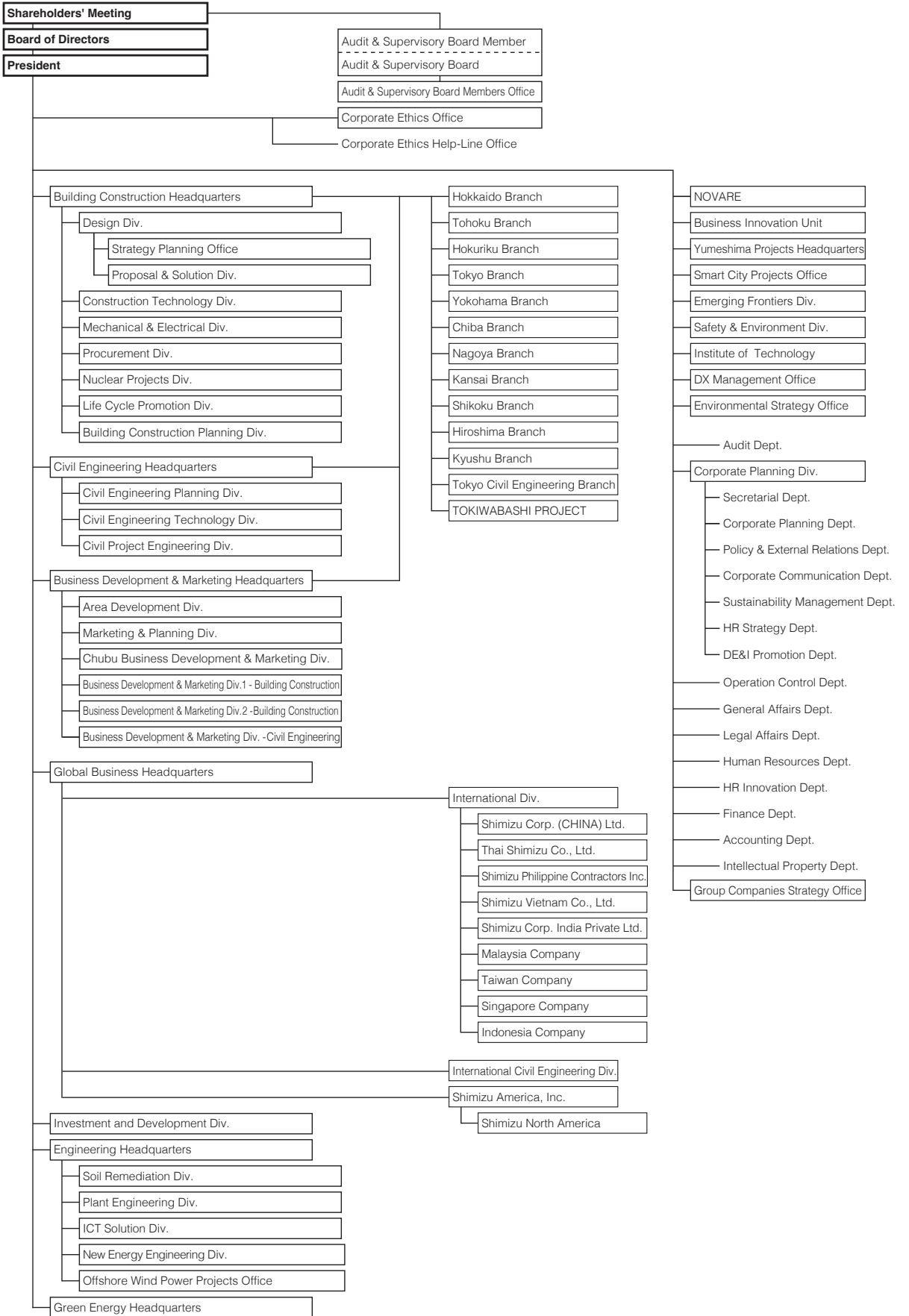
Annual Sales ¥2,005,518 million (US\$13,239,496 thousand)  
(US\$1=¥151.48/Year ended March 31, 2024)

Total  
Employees 10,949  
(As of March 31, 2024)

Doctors of Engineering, Physical Science & Other Subjects	166
Consultant Engineers	816
Licensed First-class Architects	2,050
Licensed First-class Civil Engineers	1,444

The number of consolidated employees is 20,515.

# Corporate Organization



## Management

### **Board of Directors**

#### **Chairman of the Board and Representative Director**

Kazuyuki Inoue

#### **President and Representative Director**

Tatsuya Shimmura

#### **Executive Vice President and Representative Director**

Kentaro Ikeda

#### **Executive Vice President and Director**

Takeshi Sekiguchi

#### **Representative Director**

Yoshiki Higashi

#### **Directors**

Yoichi Miyamoto

Noriaki Shimizu

Tamotsu Iwamoto

Junichi Kawada

Mayumi Tamura

Yumiko Jozuka

Note: President and Representative Director Tatsuya Shimmura, Executive Vice President and Representative Director Kentaro Ikeda, Executive Vice President and Director Takeshi Sekiguchi, Representative Director Yoshiki Higashi concurrently serve as an Executive Officer.

Director Noriaki Shimizu is a Non-Executive Director and head of the Nomination and Compensation Committee. Directors Tamotsu Iwamoto, Junichi Kawada, Mayumi Tamura and Yumiko Jozuka are outside directors.

### **Executive Officers**

#### **President**

Tatsuya Shimmura

#### **Executive Vice Presidents**

Kentaro Ikeda

Takeshi Sekiguchi

Yoshito Tsutsumi

Masanobu Onishi

Takao Haneda

#### **Senior Managing Officers**

Yoshiki Higashi

Kouichi Yamashita

Kojiro Shimizu

Takefumi Saito

Hideo Yokoyama

Toshihide Suenaga

Hitoshi Fujita

#### **Managing Officers**

Tomoaki Harada

Akinobu Sakao

Mitsuo Morii

Hiroyuki Fujimoto

Mika Kaneko

Toshiyuki Nakahara

Kazuya Osako

Haruhiko Washimi

Takuya Ito

Toru Noda

Naruki Ohashi

Shuji Kakegawa

### **Executive Officers**

Kazuyuki Oki

Katsuyoshi Yuhara

Yasuhiro Takenaka

Michiho Yamaguchi

Shigeru Matsumoto

Junichiro Kakuno

Mohi U.Ahmed

Shunsuke Oka

Yutaka Shimizu

Hideyuki Tominaga

Naoki Iwagaki

Nobuyoshi Kikuchi

Kazumi Sato

Toru Aoki

Osamu Nakagawa

Kazu Miyata

Takayuki Kawasaki

Yasuhide Yamada

Kounari Yotsumoto

Yoshiro Kobayashi

Kentaro Nakagawa

Eiichi Shinma

Yoshihisa Sonoki

Osamu Shibato

Takayuki Himono

Ichiro Nokubo

Hiroaki Oda

Taizo Tsukada

### **Audit & Supervisory Board Members**

Hideto Watanabe

Hiroshi Kobayashi

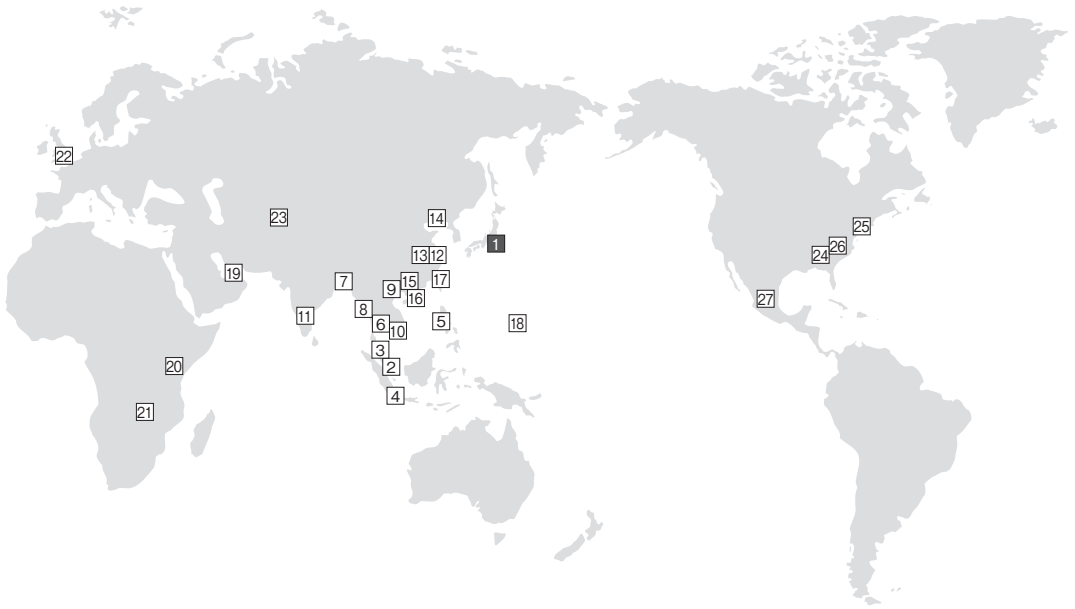
Kaoru Ishikawa

Toshie Ikenaga

Ko Shikata

Note: Audit & Supervisory Board Members Kaoru Ishikawa, Toshie Ikenaga and Ko Shikata are outside auditors.

# International Business Network



- |                          |                     |               |              |
|--------------------------|---------------------|---------------|--------------|
| 1 Tokyo<br>(Head Office) | 8 Yangon            | 16 Hong Kong  | 24 New York  |
| 2 Singapore              | 9 Hanoi             | 17 Taipei     | 25 Charlotte |
| 3 Kuala Lumpur           | 10 Ho Chi Minh City | 18 Guam       | 26 Querétaro |
| 4 Jakarta                | 11 Bengaluru        | 19 Nairobi    |              |
| 5 Manila                 | 12 Shanghai         | 20 Copperbelt |              |
| 6 Bangkok                | 13 Suzhou           | 21 London     |              |
| 7 Dhaka                  | 14 Dalian           | 22 Tashkent   |              |
|                          | 15 Guangzhou        | 23 Atlanta    |              |

## Domestic Offices

Shimizu Corporation Head Office  
 No.16-1 Kyobashi 2-chome, Chuo-ku, Tokyo 104-8370,  
 Japan  
 Phone: 81-3-3561-1111 <https://www.shimz.co.jp/en/>

## Branches

Tokyo, Yokohama, Chiba, Osaka, Takamatsu, Sapporo,  
 Sendai, Kanazawa, Nagoya, Hiroshima, Fukuoka

Local Offices (70 locations)

## Asia

### Singapore

● Shimizu Corporation  
 ■ Shimizu Investment (Asia) Pte. Ltd.  
 ■ Shimizu International Capital (Singapore) Pte. Ltd.  
 8 Kallang Avenue #05-05, Aperia Tower 1, Singapore 339509  
 Phone: 65-6220-0406

### Kuala Lumpur

● Shimizu Corporation  
 12-3, 12th Floor, Faber Imperial Court, Jalan Sultan Ismail,  
 50250 Kuala Lumpur, Malaysia  
 Phone: 60-3-2070-0000 Facsimile: 60-3-2072-0222

### Jakarta

● Shimizu Corporation  
 ■ PT Shimizu Bangun Cipta Kontraktor  
 Trinity Tower 51st Fl. Suite 07, 08, 09, 10, 15 dan 16, Jl. H.R.  
 Rasuna Said Kav. C22 Blok IIB, Kec. Setiabudi, Kel. Karet  
 Kuningan, Jakarta 12940, Indonesia  
 Phone: 62-21-2526-901 Facsimile: 62-21-2526-906

### Manila

● Shimizu Corporation  
 ■ Shimizu Philippine Contractors, Inc.  
 5th Floor, King's Court Building I, 2129 Chino Roces  
 Avenue, Makati, Metro Manila, Philippines  
 Phone: 63-2-8811-2981 Facsimile: 63-2-8811-2985

● Overseas Offices
■ Overseas Subsidiaries and Affiliates

### **Bangkok**

● Shimizu Corporation

■ Thai Shimizu Co., Ltd.

Unit 2301, 23rd Floor, Empire Tower, 1 South Sathorn Road, Yannawa, Sathorn, Bangkok 10120, Thailand

Phone: 66-2-230-0333 Facsimile: 66-2-230-0303

### **Dhaka**

● Shimizu Corporation

Concord I-K Tower (5th Floor), Plot No. 2, Block CEN(A), North Avenue, Gulshan-2, Dhaka-1212, Bangladesh

Phone: 880-2-5505-2034 Facsimile: 880-2-5505-2036

### **Yangon**

● Shimizu Corporation

No.16-1 Kyobashi 2-chome, Chuo-ku, Tokyo 104-8370, Japan (Global Business Headquarters)

Phone: 81-3-3561-1111

### **Hanoi**

● Shimizu Corporation

■ Shimizu Vietnam Co., Ltd.

3rd Floor, Lang Ha Building, 14 Lang Ha, Ba Dinh District, Hanoi, Vietnam

Phone: 84-24-3772-0500 Facsimile: 84-24-3772-3570

### **Ho Chi Minh City**

● Shimizu Corporation

■ Shimizu Vietnam Co., Ltd.

4th Floor, The Landmark, 5B Ton Duc Thang, District 1, Ho Chi Minh City, Vietnam

Phone: 84-28-3824-1807 Facsimile: 84-28-3824-1809

### **Bengaluru**

● Shimizu Corporation

■ Shimizu Corporation India Pvt. Ltd.

No.74, 4th Floor, Unit 402, "Prestige Feroze" Building, Cunningham Road, Vasanth Nagar, Bengaluru, 560052, India

Phone: 91-80-4356-7777

### **Shanghai**

● Shimizu Corporation

■ Shimizu Corporation (China) Ltd.

Room 2001, No. 4, Lane 255, Dongyu Rd, Pudong District, Shanghai 200126, China

Phone: 86-21-62708800 Facsimile: 86-21-62706600

### **Suzhou**

■ Shimizu Corporation (China) Ltd.

Room 2004, Bldg 13, Suzhou Longhuzhongxin, No. 79, Jinshan East Rd., Huqiu District, Suzhou, Jiangsu, China

Phone: 86-512-6272-6070

### **Dalian**

■ Shimizu Corporation (China) Ltd.

c/o Inn Fine Hotel Room 700, 135 Jinma Road, Dalian Economic & Technical Development Zone, Dalian 116600, China

Phone: 86-411-8761-5125/5134

### **Guangzhou**

■ Shimizu Corporation (China) Ltd.

Room A05, 25th Floor, Sunrich Plaza, No. 988 Guangzhou Avenue Middle, Tianhe District, Guangzhou City, 510620, China

Phone: 86-20-8527-7160

### **Hong Kong**

● Shimizu Hong Kong Company Ltd.

Room 4313-4322, Metroplaza, Tower 1, No. 223 Hing Fong Road, Kwai Fong, N.T. Hong Kong, China

Phone: 852-2582-6888 Facsimile: 852-2827-1918

### **Taipei**

● Shimizu Corporation

7F-2, No.111, Song Jiang Rd., Zhongshan District, Taipei, 104-86, Taiwan

Phone: 886-2-2517-6580 Facsimile: 886-2-2516-0650

### **Oceania**

#### **Guam**

● Shimizu Corporation

Unit 205 Baltej Pavilion, 415 Chalan San Antonio, Tamuning, Guam, 96913

Phone: 1-671-969-1356

### **Africa**

#### **Nairobi**

● Shimizu Corporation

Britam Tower, Hospital Road, Upper Hill, Nairobi, Kenya

Phone: 254-11-105-2670

#### **Copperbelt**

● Shimizu Corporation

Apartment I Plot 410/411 Chiwala Road Parklands, Kitwe Zambia

Phone: 260-977-790-626

### **Europe**

#### **London**

● Shimizu Corporation

91 Wimpole Street, Marylebone, London W1G 0EF, United Kingdom

Phone: 44-20-3908-5947

#### **Tashkent**

● Shimizu Corporation

App.#1, House #6, Khadra Avenue, Shaykhontohur District, Tashkent City, 100000, Republic of Uzbekistan

Phone: 81-3-3561-1111

### **North America**

#### **Atlanta**

■ Shimizu America, Inc.

2100 Riveredge Parkway, Suite 1100, Atlanta, GA, 30328, USA

Phone: 1-770-956-1123 Facsimile: 1-770-956-7575

■ Shimizu North America LLC

2100 Riveredge Parkway, Suite 1100, Atlanta, GA, 30328, USA

Phone: 1-770-956-1123 Facsimile: 1-770-956-7575

#### **New York**

● Shimizu Corporation

■ Shimizu North America LLC

■ Shimizu International Finance (U.S.A), Inc.

■ Shimizu Realty Development (U.S.A), Inc.

155 East 56th street, 4th Floor, New York, NY 10022, U.S.A.

Phone: 1-212-223-7757 Facsimile: 1-212-223-1930

#### **Charlotte**

■ Perigon International, Inc.

931 Industrial Drive Matthews, NC 28105, U.S.A.

Phone: 1-704-246-2000

#### **Querétaro, Mexico**

■ Shimizu North America LLC Mexico Branch

Av. Tecnológico Norte #950-B, Piso 15-A, Corporativo Blanco,

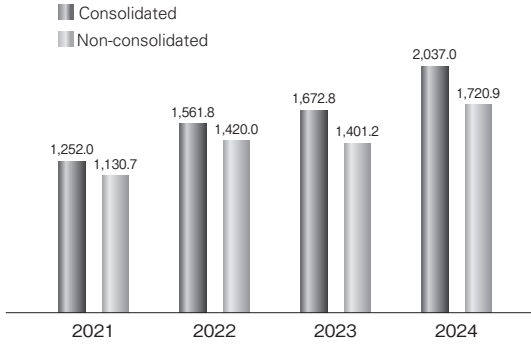
Col. San Pablo, Querétaro, Qro. C.P.76125 MEXICO

Phone: 52-442-189-4160

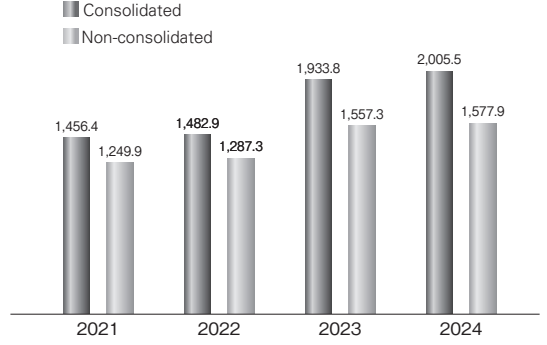
## Business Results

(Years ended March 31, 2021 through 2024)

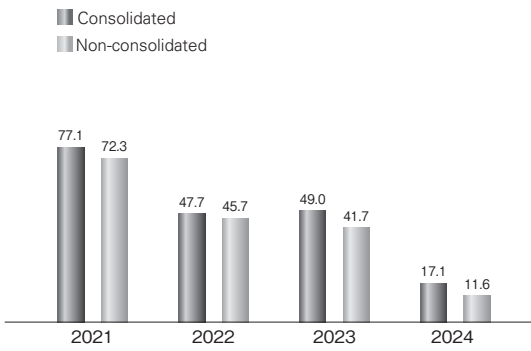
Construction Orders Awarded  
(Billions of Yen)



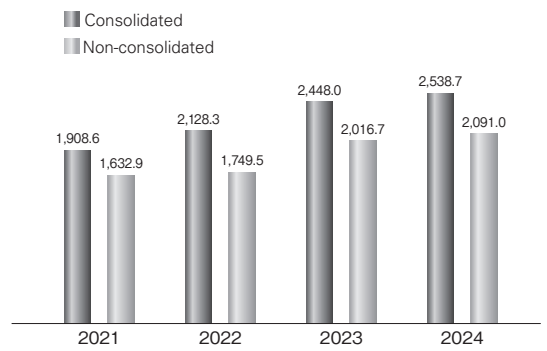
Net Sales  
(Billions of Yen)



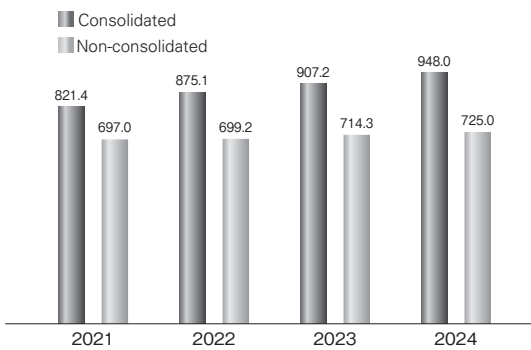
Net Income  
(Billions of Yen)



Total Assets  
(Billions of Yen)



Net Assets  
(Billions of Yen)



Interest-bearing Debt  
(Billions of Yen)

