



Corporate Information

A Brief Outline

- Lines of business
- 1 Contracting for building, civil engineering, machinery and other construction works;
 - 2 Research, planning, study, evaluation, diagnosis, soil analysis, surveying, design, supervision, management and consultancy in connection with construction works;
 - 3 Research, planning, design, supervision, management and consultancy in connection with regional development, urban development, ocean development, space development, resources and energy development, and environment improvement, and the like;
 - 4 Purchase, sale, letting, brokerage, management, appraisal and consultancy in connection with real estate;
 - 5 Construction, sale, letting and caretaking of residential houses and other kinds of buildings and development and sale of land;
 - 6 Second financial instruments business, investment advisory and agency business under the Financial Instruments and Exchange Law and business under the Real Estate Specific Joint Enterprise Law;
 - 7 Planning, construction, possession, maintenance and operation of public and quasi-public facilities such as public office buildings, educational and cultural facilities, medical and welfare facilities, roads, harbors, airports, parks, water supply and sewerage facilities and the like;
 - 8 Generation of electrical power and supply of energy such as electricity, heat and the like, and the transfer of emission rights of gases having global warming effect, and consultancy in connection therewith;
 - 9 Cultivation of agricultural produce, forestry work, cultivation of seafood; processing and sale of products from said operations and management of facilities related to said operations; and consulting work related to the above;
 - 10 Undertaking of soil analysis and purification work, collection, disposition, disposal, and reutilization of waste, and consultancy in connection therewith;
 - 11 Design, installation, sale, lease, maintenance and consultancy in relation to information communication systems, building management systems and the like;
 - 12 Maintenance and upkeep, security and cleaning of buildings, equipment and machinery;
 - 13 Design, manufacturing, sale, lease and brokerage of construction machinery, concrete products for construction, wooden products for building construction, furniture, interior fittings and wood products, and sale, lease and brokerage of construction materials;
 - 14 Acquisition, licensing and sale of industrial property, copyrights, know-how and computer software;
 - 15 Management and consultancy in relation to sporting facilities, hotels, restaurants and resort facilities;
 - 16 Sales of pharmaceuticals, medical care materials, medical machinery and equipment, management of and consultancy in relation to facilities with nursing services for senior citizens, and domestic nursing service;
 - 17 Planning, production and sales of advertisements, publications, printing, images and other information media, and planning, operation and consultancy in relation to business events;
 - 18 Inland transportation, and the operation of warehouses and distribution centers;
 - 19 Agency for non-life insurance, agency for life insurance, travel agency and manpower supply agency;
 - 20 Financial business such as loans, guarantees and factoring;
 - 21 Overseas operations in connection with any of the preceding items; and
 - 22 Any and all business related to or associated with any of the preceding items.

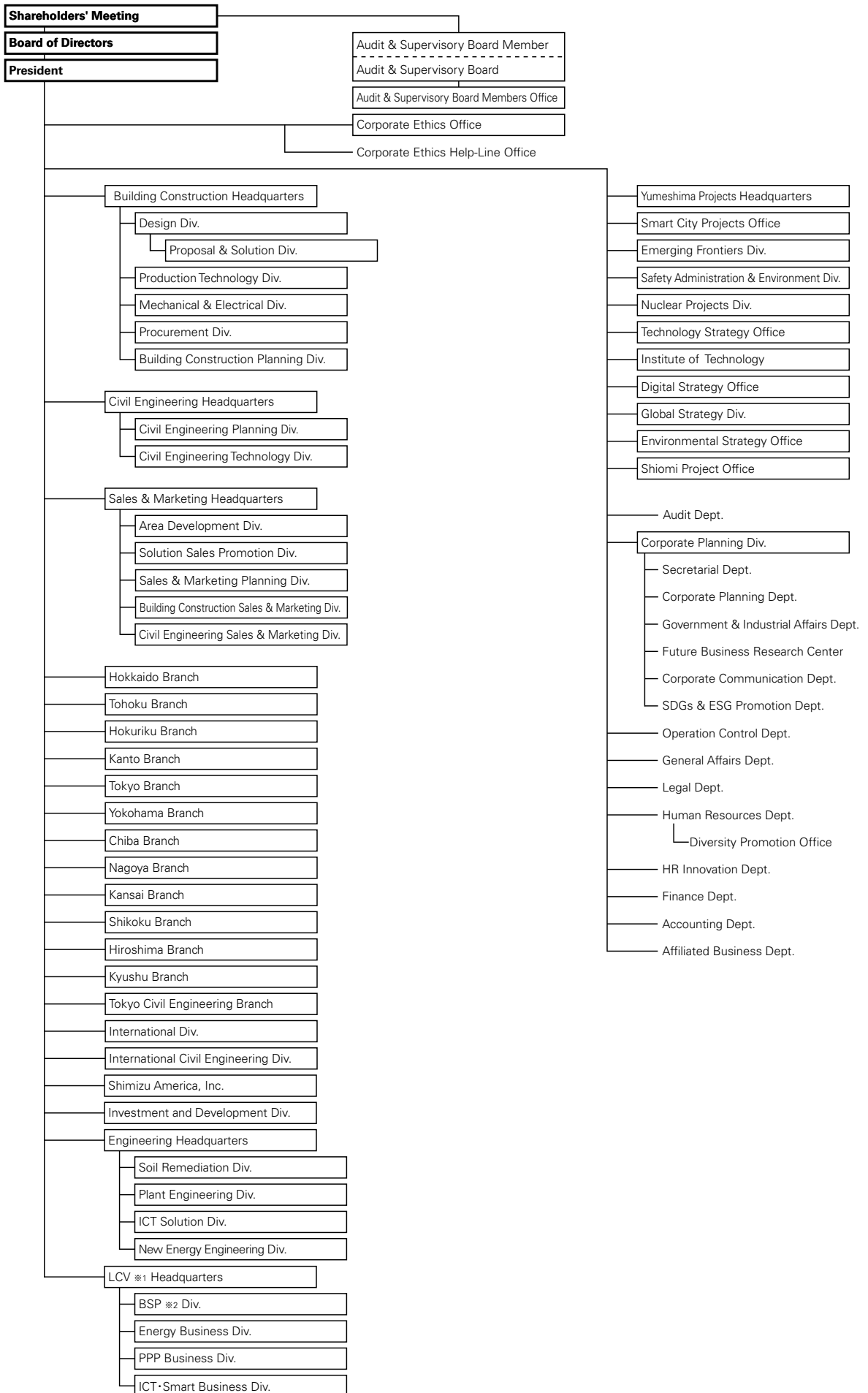
Paid-in Capital ¥74,365 million (US\$672,198 thousand)
(US\$1=¥110.63/Year ended March 31, 2021)

Annual Sales ¥1,249,985 million (US\$11,298,796 thousand)
(US\$1=¥110.63/Year ended March 31, 2021)

Total Employees 10,494
(As of March 31, 2021)

Doctors of Engineering, Physical Science & Other Subjects	168
Consultant Engineers	798
Licensed First-class Architects	2,051
Licensed First-class Civil Engineers	1,470

Corporate Organization



※1 Life Cycle Valuation
 ※2 Building Service Provider

Management

Board of Directors

Chairman of the Board and Representative Director

Yoichi Miyamoto

President and Representative Director

Kazuyuki Inoue

Executive Vice President and Representative Director

Toshiyuki Imaki

Executive Vice President and Director

Toru Yamaji

Executive Vice President and Representative Director

Kimio Handa

Executive Vice President and Director

Hiroshi Fujimura

Representative Director

Kentaro Ikeda

Directors

Motoaki Shimizu

Tamotsu Iwamoto

Junichi Kawada

Mayumi Tamura

Yumiko Jozuka

Note: President and Representative Director Kazuyuki Inoue, Executive Vice President and Representative Director Toshiyuki Imaki, Executive Vice President and Director Toru Yamaji, Executive Vice President and Representative Director Kimio Handa, Executive Vice President and Director Hiroshi Fujimura, Representative Director Kentaro Ikeda concurrently serves as an Executive Officer.
Directors Tamotsu Iwamoto, Junichi Kawada, Mayumi Tamura and Yumiko Jozuka are outside directors.

Executive Officers

President

Kazuyuki Inoue

Executive Vice Presidents

Toshiyuki Imaki

Toru Yamaji

Kimio Handa

Hiroshi Fujimura

Senior Managing Officers

Masahiro Indo

Yutaka Ishikawa

Koichi Ishimizu

Kentaro Ikeda

Yoshito Tsutsumi

Masanobu Onishi

Managing Officers

Takeshi Sekiguchi

Yasuhide Kuwahara

Yoshiki Higashi

Takao Haneda

Atsushi Osada

Hiroaki Taniguchi

Shinichi Takiguchi

Akira Yamazaki

Mitsuo Morii

Toshihide Suenaga

Kouichi Yamashita

Tatsuya Shinmura

Executive Officers

Kojiro Shimizu

Haruhiko Washimi

Kazuhiko Kato

Yoshihiro Higuchi

Takayuki Sakakima

Kazuya Osako

Toru Furuya

Hideo Yokoyama

Hitoshi Fujita

Sadao Matsuhashi

Yasuhide Yamada

Yutaka Gozu

Takefumi Saito

Masakazu Hyodo

Tomoaki Harada

Masamichi Miki

Osamu Nakagawa

Toru Noda

Takuya Ito

Nobuhiko Sasaki

Akinobu Sakao

Katsumi Sawahata

Hiroyuki Fujimoto

Mika Kaneko

Naomi Onishi

Naruki Ohashi

Audit & Supervisory Board Members

Hideto Watanabe

Koichi Matsuoka

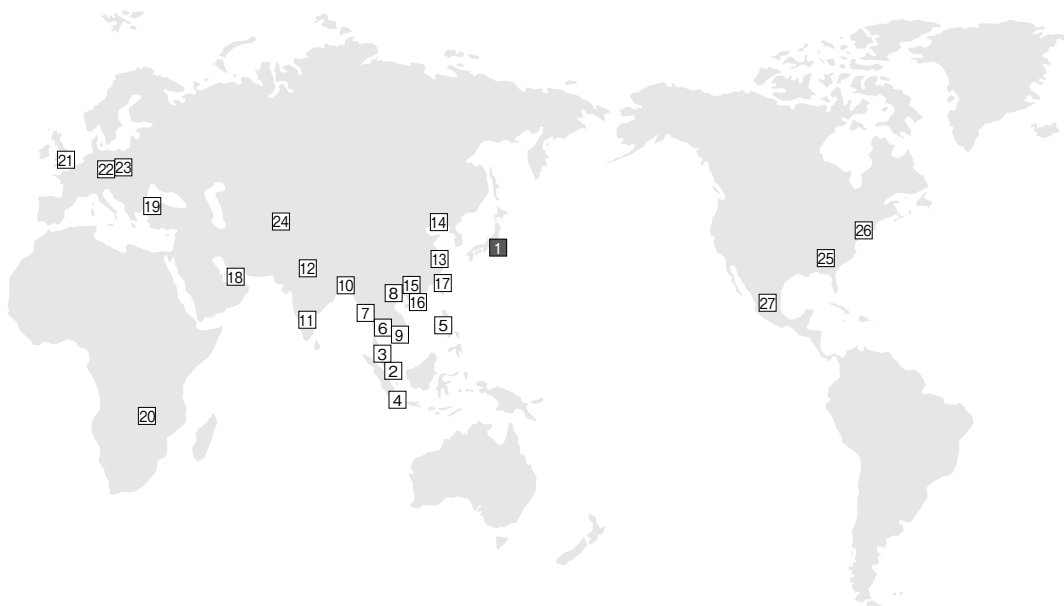
Tetsuya Nishikawa

Kaoru Ishikawa

Toshie Ikenaga

Note: Audit & Supervisory Board Members Tetsuya Nishikawa, Kaoru Ishikawa and Toshie Ikenaga are outside auditors.

International Business Network



- | | | | |
|--------------------------|--------------------|--------------|--------------|
| 1 Tokyo
(Head Office) | 7 Yangon | 14 Dalian | 21 London |
| 2 Singapore | 8 Hanoi | 15 Guangzhou | 22 Prague |
| 3 Kuala Lumpur | 9 Ho Chi Minh City | 16 Hong Kong | 23 Wrocław |
| 4 Jakarta | 10 Dhaka | 17 Taipei | 24 Tashkent |
| 5 Manila | 11 Bangalore | 18 Dubai | 25 Atlanta |
| 6 Bangkok | 12 Gurgaon | 19 Istanbul | 26 New York |
| | 13 Shanghai | 20 Lusaka | 27 Querétaro |

Domestic Offices

Shimizu Corporation Head Office
No.16-1 Kyobashi 2-chome, Chuo-ku, Tokyo 104-8370, Japan
Phone: 81-3-3561-1111 <https://www.shimz.co.jp/en/>

Branches

Tokyo, Yokohama, Chiba, Osaka, Kobe, Takamatsu, Sapporo, Sendai, Kanazawa, Saitama, Nagoya, Hiroshima, Fukuoka

Local Offices (71 locations)

Asia

- Overseas Offices
- Overseas Subsidiaries and Affiliates

Singapore

- Shimizu Corporation
- Shimizu Investment (Asia) Pte. Ltd.
- Shimizu International Capital (Singapore) Pte. Ltd.

8 Kallang Avenue #05-01, Aperia Tower 1, Singapore 339509
Phone: 65-6220-0406

Malaysia

Kuala Lumpur

- Shimizu Corporation

12-3, 12th Floor, Faber Imperial Court, Jalan Sultan Ismail, 50250 Kuala Lumpur, Malaysia
Phone: 60-3-2070-0000 Facsimile: 60-3-2072-0222

Indonesia

Jakarta

- Shimizu Corporation
- PT Shimizu Bangun Cipta Kontraktor

Gedung Setiabudi Atrium Lantai 6, Suite 601, Jl. H.R. Rasuna Said Kav 62 Kuningan Jakarta 12920, Indonesia
Phone: 62-21-2904-7777 Facsimile: 62-21-5290-2067

Philippines

Manila

- Shimizu Corporation
- Shimizu Philippine Contractors, Inc.

5th Floor, King's Court Building I, 2129 Chino Roces Avenue, Makati, Metro Manila, Philippines
Phone: 63-2-811-2981 Facsimile: 63-2-811-2985

Thailand

Bangkok

● Shimizu Corporation

■ Thai Shimizu Co., Ltd.

Unit 2301, 23rd Floor, Empire Tower, 1 South Sathorn Road, Yannawa, Sathorn, Bangkok 10120, Thailand
Phone: 66-2-230-0333 Facsimile: 66-2-230-0303

Myanmar

Yangon

● Shimizu Corporation

Room#109B, Prime Hill Business Square No60, Shwe Dagon Pagoda Road, Dagon Township, Yangon, Myanmar
Phone: 95-1-9250064 Facsimile: 95-1-9250065

Vietnam

Hanoi

● Shimizu Corporation

■ Shimizu Vietnam Co., Ltd.

3rd Floor, Lang Ha Building, 14 Lang Ha, Ba Dinh District, Hanoi, Vietnam
Phone: 84-24-3772-0500 Facsimile: 84-24-3772-3570

Ho Chi Minh City

● Shimizu Corporation

4th Floor, The Landmark, 5B Ton Duc Thang, District 1, Ho Chi Minh City, Vietnam
Phone: 84-28-3824-1807 Facsimile: 84-28-3824-1809

India

Bangalore

● Shimizu Corporation

■ Shimizu Corporation India Pvt. Ltd.

G02, Ground Floor, Prestige Sigma, No.03, Vittal Mallya Road, Bangalore 560001, Karnataka, India
Phone: 91-80-4356-7777 Facsimile: 91-80-4356-7778

Gurgaon

● Shimizu Corporation

■ Shimizu Corporation India Pvt. Ltd.

1003B, 10th Floor, BPTP Park Centra, Sector 30, NH-8, Gurugram 122003, Haryana, India
Phone: 91-124-460-8100 Facsimile: 91-124-460-8180

China

Shanghai

● Shimizu Corporation

■ Shimizu Corporation (China) Ltd.

Room 2001, No. 4, Lane 255, Dongyu Rd, Pudong District, Shanghai 200126, China
Phone: 86-21-6270-8800 Facsimile: 86-21-6270-6600

Dalian

■ Shimizu Corporation (China) Ltd.

c/o Inn Fine Hotel Room 700, 135 Jinma Road, Dalian Economic & Technical Development Zone, Dalian 116600, China
Phone: 86-411-8761-5125/5134

Guangzhou

■ Shimizu Corporation (China) Ltd.

Room 1212, Central Tower, No. 5, Xiancun Road, Pearl River New Town, Tianhe District, Guangzhou, 510623, China
Phone: 86-20-8226-4893 Facsimile: 86-20-8226-4889

Hong Kong

● Shimizu Corporation

Room 1313-1315, Metroplaza, Tower 1, No. 223 Hing Fong Road, Kwai Fong, N.T., Hong Kong, China
Phone: 852-2582-6888 Facsimile: 852-2827-1918

Taiwan

Taipei

● Shimizu Corporation

7F-2, No.111, Song Jiang Rd., Zhongshan District, Taipei, 104-86, Taiwan
Phone: 886-2-2517-6580 Facsimile: 886-2-2516-0650

Middle East United Arab Emirates

Dubai

● Shimizu Corporation

Office 1C 1st Floor Albwardy Building, Bur Dubai, Khalid Bin Walid Road, P.O.Box 122372, Dubai, UAE
Phone: 971-4-351-5901 Facsimile: 971-4-351-5902

Turkey

Istanbul

● Shimizu Corporation

Saray Mahallesi, kucuksu Caddesi No:64/A, Antasya Residence Kat:9 No:139 34768 Umraniye, Istanbul Turkey
Phone:90-216-504-7213 Facsimile:90-216-504-7198

Africa

Zambia

Lusaka

■ Shimizu Corporation

House No.2, One Sunningdale, Stand No. 16847, off Mwinilunga Road, Sunningdale, Lusaka, Zambia
Phone: 260-211-267-762

Europe

United Kingdom

London

● Shimizu Corporation

91 Wimpole Street, Marylebone, London W1G 0EF, United Kingdom
Phone: 44-20-3908-5947

Czech Republic

Prague

● Shimizu Corporation

Křenova 438/1, 162 00, Praha 6, Czech Republic
Phone: 420-2-3536-6336 Facsimile: 420-2-3536-0302

Poland

Wroclaw

● Shimizu Corporation

Mikolaja 7, 50-125 Wroclaw, Poland
Phone:48-71-344-3401 Facsimile:48-71-344-1902

Uzbekistan

Tashkent

● Shimizu Corporation

52, Kuloltuprok Street 100100, Tashkent, Republic of Uzbekistan
Phone: 998-71-120-7297 Facsimile: 998-71-120-7121

North America U.S.A.

Atlanta

■ Shimizu America, Inc.

1000 Parkwood Circle, Suite 810, Atlanta, GA 30339, U.S.A.
Phone: 1-770-956-1123 Facsimile: 1-770-956-7575

■ Shimizu North America LLC

1000 Parkwood Circle, Suite 820, Atlanta, GA 30339, U.S.A.
Phone: 1-770-956-1123 Facsimile: 1-770-956-7575

New York

● Shimizu Corporation

■ Shimizu North America LLC

■ Shimizu International Finance (U.S.A), Inc.

155 East 56th street, 4th Floor, New York, NY 10022, U.S.A.
Phone:1-212-223-7757 Facsimile:1-212-223-1930

Mexico

Querétaro

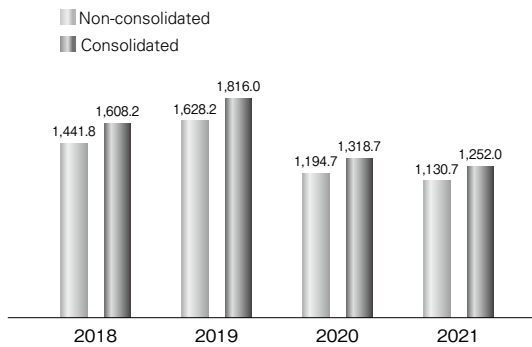
■ Shimizu North America LLC

Av. Tecnológico Norte #950-B, Piso 15-A, Corporativo Blanco, Col. San Pablo, Querétaro, Qro. C.P.76125 MEXICO
Phone: 52-442-189-4160

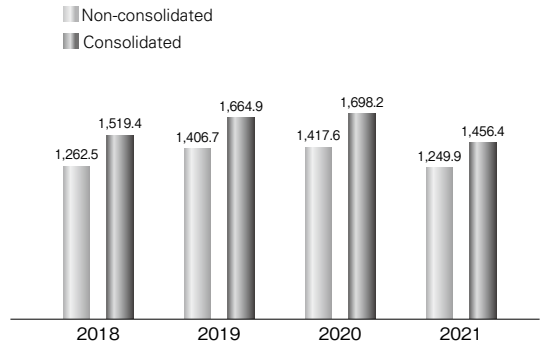
Business Results

(Years ended March 31, 2018 through 2021)

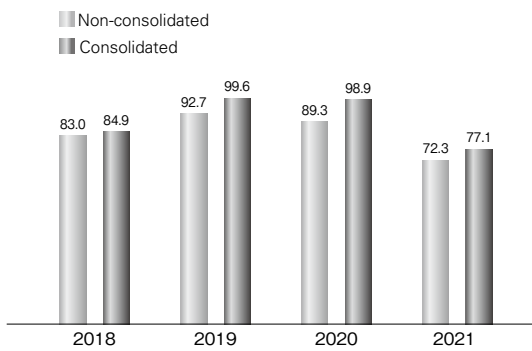
Construction Orders Awarded
(Billions of Yen)



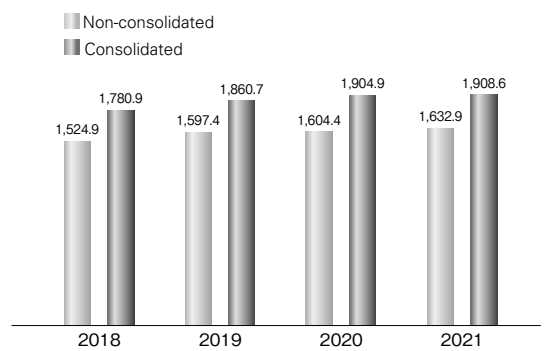
Net Sales
(Billions of Yen)



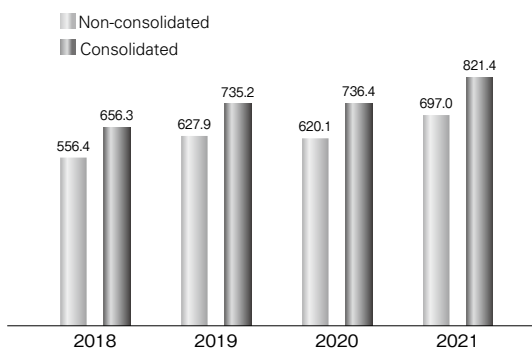
Net Income
(Billions of Yen)



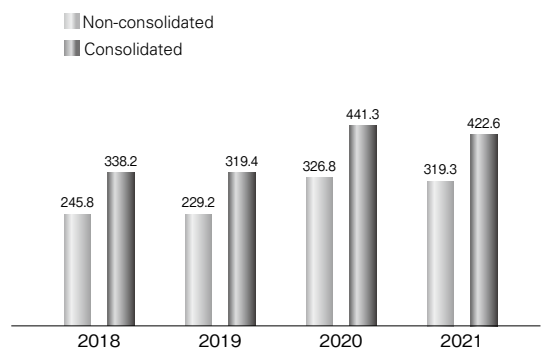
Total Assets
(Billions of Yen)



Net Assets
(Billions of Yen)



Interest-bearing Debt
(Billions of Yen)



Today's Work, Tomorrow's Heritage

