



Corporate Information

A Brief Outline

- Lines of business
- 1 Contracting for building, civil engineering, machinery and other construction works;
 - 2 Research, planning, study, evaluation, diagnosis, soil analysis, surveying, design, supervision, management and consultancy in connection with construction works;
 - 3 Research, planning, design, supervision, management and consultancy in connection with regional development, urban development, ocean development, space development, resources and energy development, and environment improvement, and the like;
 - 4 Purchase, sale, letting, brokerage, management, appraisal and consultancy in connection with real estate;
 - 5 Construction, sale, letting and caretaking of residential houses and other kinds of buildings and development and sale of land;
 - 6 Second financial instruments business, investment advisory and agency business under the Financial Instruments and Exchange Law and business under the Real Estate Specific Joint Enterprise Law;
 - 7 Planning, construction, possession, maintenance and operation of public and quasi-public facilities such as public office buildings, educational and cultural facilities, medical and welfare facilities, roads, harbors, airports, parks, water supply and sewerage facilities and the like;
 - 8 Generation of electrical power and supply of energy such as electricity, heat and the like, and the transfer of emission rights of gases having global warming effect, and consultancy in connection therewith;
 - 9 Cultivation of agricultural produce, forestry work, cultivation of seafood; processing and sale of products from said operations and management of facilities related to said operations; and consulting work related to the above;
 - 10 Undertaking of soil analysis and purification work, collection, disposition, disposal, and reutilization of waste, and consultancy in connection therewith;
 - 11 Design, installation, sale, lease, maintenance and consultancy in relation to information communication systems, building management systems and the like;
 - 12 Maintenance and upkeep, security and cleaning of buildings, equipment and machinery;
 - 13 Design, manufacturing, sale, lease and brokerage of construction machinery, concrete products for construction, wooden products for building construction, furniture, interior fittings and wood products, and sale, lease and brokerage of construction materials;
 - 14 Acquisition, licensing and sale of industrial property, copyrights, know-how and computer software;
 - 15 Management and consultancy in relation to sporting facilities, hotels, restaurants and resort facilities;
 - 16 Sales of pharmaceuticals, medical care materials, medical machinery and equipment, management of and consultancy in relation to facilities with nursing services for senior citizens, and domestic nursing service;
 - 17 Planning, production and sales of advertisements, publications, printing, images and other information media, and planning, operation and consultancy in relation to business events;
 - 18 Inland transportation, and the operation of warehouses and distribution centers;
 - 19 Agency for non-life insurance, agency for life insurance, travel agency and manpower supply agency;
 - 20 Financial business such as loans, guarantees and factoring;
 - 21 Overseas operations in connection with any of the preceding items; and
 - 22 Any and all business related to or associated with any of the preceding items.

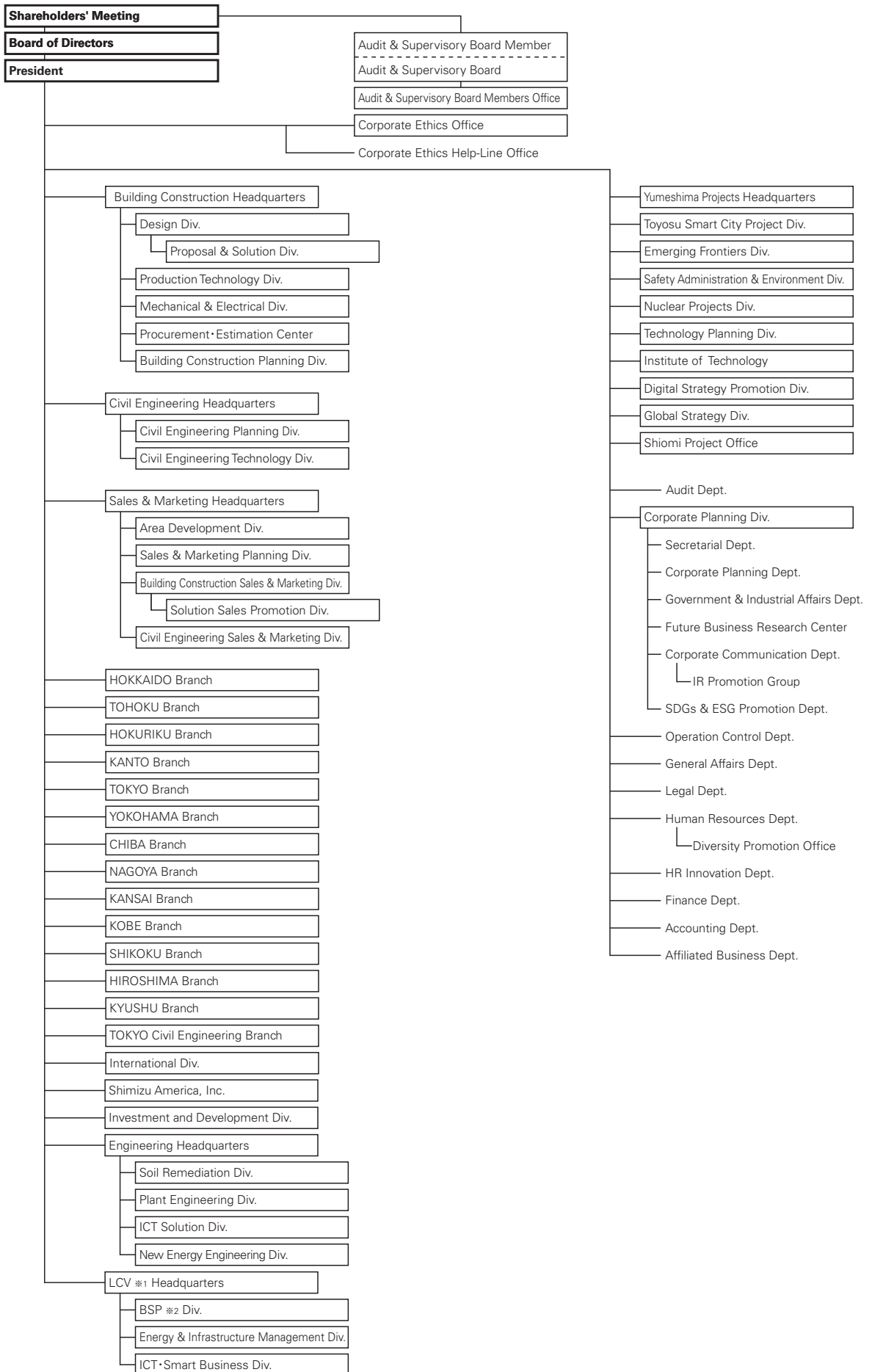
Paid-in Capital ¥74,365 million (US\$687,867 thousand)
(US\$1=¥108.11/Year ended March 31, 2020)

Annual Sales ¥1,417,604 million (US\$13,112,613 thousand)
(US\$1=¥108.11/Year ended March 31, 2020)

Total Employees 10,384
(As of March 31, 2020)

Doctors of Engineering, Physical Science & Other Subjects	165
Consultant Engineers	789
Licensed First-class Architects	2,051
Licensed First-class Civil Engineers	1,461

Corporate Organization



※1 Life Cycle Valuation

※2 Building Service Provider

Management

Board of Directors

Chairman of the Board and Representative Director

Yoichi Miyamoto

President and Representative Director

Kazuyuki Inoue

Executive Vice Presidents and Representative Directors

Toshiyuki Imaki
Toru Yamaji

Representative Director

Tsunehiko Yamanaka

Directors

Hiroshi Fujimura
Kimio Handa
Motoaki Shimizu
Tamotsu Iwamoto
Aya Murakami
Mayumi Tamura

Note: President and Representative Director Kazuyuki Inoue, Executive Vice President and Representative Director Toshiyuki Imaki and Toru Yamaji, Representative Director Tsunehiko Yamanaka, Director Hiroshi Fujimura and Kimio Handa concurrently serves as an Executive Officer.

Directors Tamotsu Iwamoto and Aya Murakami and Mayumi Tamura are external directors.

Executive Officers

President

Kazuyuki Inoue

Executive Vice Presidents

Toshiyuki Imaki
Toru Yamaji
Koji Ikeda

Senior Managing Officers

Tsunehiko Yamanaka
Yutaka Ishikawa
Koichi Ishimizu
Hiroshi Fujimura
Shigeru Namioka
Kimio Handa
Masahiro Indo

Managing Officers

Yoshito Tsutsumi
Kentaro Ikeda
Masatoshi Misawa
Masanobu Onishi
Naoki Kita
Hiroaki Taniguchi
Shinichi Takiguchi
Takahisa Shiota
Akira Yamazaki
Atsushi Osada
Takeshi Sekiguchi
Yasuhide Kuwahara
Mitsuo Morii
Yoshiki Higashi
Takao Haneda

Executive Officers

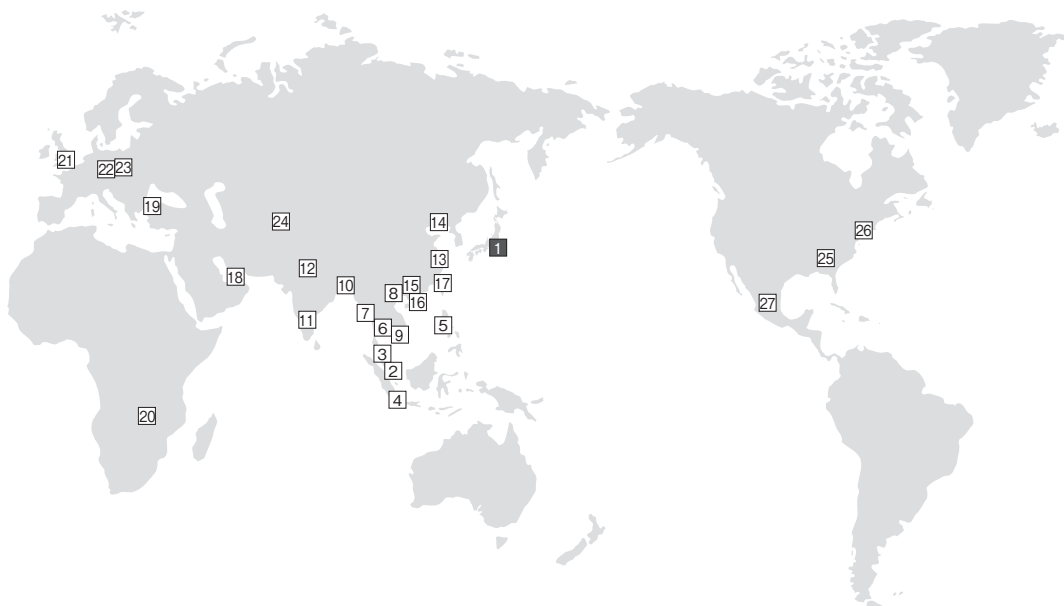
Tatsuya Shinmura
Yutaka Gozu
Takefumi Saito
Osamu Nakagawa
Kojiro Shimizu
Kouichi Yamashita
Toshihide Suenaga
Yoshinari Dendoh
Tomoaki Harada
Masamichi Miki
Yasuhide Yamada
Masakazu Hyodo
Kazuhiko Kato
Kenichi Ozono
Haruhiko Washimi
Tetsu Mizuno
Takayuki Sakakima
Toshikazu Tsuji
Yoshihiro Higuchi
Sadao Matsuhashi
Toru Furuya
Kazuya Osako
Hideo Yokoyama
Hitoshi Fujita

Audit & Supervisory Board Members

Hideto Watanabe
Koichi Matsuoka
Hatsuhito Kaneko
Tetsuya Nishikawa
Kaoru Ishikawa

Note: Audit & Supervisory Board Members Hatsuhito Kaneko, Tetsuya Nishikawa and Kaoru Ishikawa are external auditors.

International Business Network



- | | | | |
|--------------------------|--------------------|--------------|--------------|
| 1 Tokyo
(Head Office) | 7 Yangon | 14 Dalian | 21 London |
| 2 Singapore | 8 Hanoi | 15 Guangzhou | 22 Prague |
| 3 Kuala Lumpur | 9 Ho Chi Minh City | 16 Hong Kong | 23 Wrocław |
| 4 Jakarta | 10 Dhaka | 17 Taipei | 24 Tashkent |
| 5 Manila | 11 Bangalore | 18 Dubai | 25 Atlanta |
| 6 Bangkok | 12 Gurgaon | 19 Istanbul | 26 New York |
| | 13 Shanghai | 20 Lusaka | 27 Querétaro |

Domestic Offices

Shimizu Corporation Head Office
No.16-1 Kyobashi 2-chome, Chuo-ku, Tokyo 104-8370, Japan
Phone: 81-3-3561-1111 <https://www.shimz.co.jp/en/>

Branches

Tokyo, Yokohama, Chiba, Osaka, Kobe, Takamatsu, Sapporo, Sendai, Kanazawa, Saitama, Nagoya, Hiroshima, Fukuoka

Local Offices (72 locations)

Asia

- Overseas Offices
- Overseas Subsidiaries and Affiliates

Singapore

- Shimizu Corporation
- Shimizu Investment(Asia) Pte. Ltd.

8 Kallang Avenue #05-01, Aperia Tower 1, Singapore 339509
Phone: 65-6220-0406 Facsimile: 65-6224-9890

Malaysia

Kuala Lumpur

- Shimizu Corporation
- 12-3, 12th Floor, Faber Imperial Court, Jalan Sultan Ismail, 50250 Kuala Lumpur, Malaysia
Phone: 60-3-2070-0000 Facsimile: 60-3-2072-0222

Indonesia

Jakarta

- Shimizu Corporation
 - PT Shimizu Bangun Cipta Kontraktor
- Gedung Setiabudi Atrium Lantai 6, Suite 601,
Jl. H.R. Rasuna Said Kav 62 Kuningan Jakarta 12920, Indonesia
Phone: 62-21-2904-7777 Facsimile: 62-21-5290-2067

Philippines

Manila

- Shimizu Corporation
 - Shimizu Philippine Contractors, Inc.
- 5th Floor, King's Court Building I, 2129 Chino Roces Avenue, Makati, Metro Manila, Philippines
Phone: 63-2-811-2981 Facsimile: 63-2-811-2985

Thailand**Bangkok**

● Shimizu Corporation

■ Thai Shimizu Co., Ltd.

Unit 2301, 23rd Floor, Empire Tower, 1 South Sathorn Road,

Yannawa, Sathorn, Bangkok 10120, Thailand

Phone: 66-2-230-0333 Facsimile: 66-2-230-0303

Myanmar**Yangon**

● Shimizu Corporation

Room#109B, Prime Hill Business Square No60, Shwe Dagon

Pagoda Road, Dagon Township, Yangon, Myanmar

Phone: 95-1-9250064 Facsimile: 95-1-9250065

Vietnam**Hanoi**

● Shimizu Corporation

■ Shimizu Vietnam Co., Ltd.

3rd Floor, Lang Ha Building, 14 Lang Ha, Ba Dinh District,

Hanoi, Vietnam

Phone: 84-24-3772-0500 Facsimile: 84-24-3772-3570

Ho Chi Minh City

● Shimizu Corporation

4th Floor, The Landmark, 5B Ton Duc Thang, District 1,

Ho Chi Minh City, Vietnam

Phone: 84-28-3824-1807 Facsimile: 84-28-3824-1809

India**Bangalore**

● Shimizu Corporation

■ Shimizu Corporation India Pvt. Ltd.

No 2 PRESTIGE EMERALD, 5th Level, Lavelle Road- Madras

Bank Road, Bangalore- 560001, India

Phone: 91-80-4356-7777 Facsimile: 91-80-4356-7778

Gurgaon

● Shimizu Corporation

■ Shimizu Corporation India Pvt. Ltd.

506, 5th Floor, Time Tower, Sector 28, Main MG Road,

Gurgaon, Haryana 122 002, India

Phone: 91-124-460-8100 Facsimile: 91-124-460-8181

China**Shanghai**

● Shimizu Corporation

■ Shimizu Corporation (China) Ltd.

Room 2001, No. 4, Lane 255, Dongyu Rd, Pudong District,

Shanghai 200126, China

Phone: 86-21-6270-8800 Facsimile: 86-21-6270-6600

Dalian

■ Shimizu Corporation (China) Ltd.

c/o Inn Fine Hotel Room 700, 135 Jinma Road,

Dalian Economic & Technical Development Zone,

Dalian 116600, China

Phone: 86-411-8761-5125/5134

Guangzhou

■ Shimizu Corporation (China) Ltd.

Room 1212, Central Tower, No. 5, Xiancun Road, Pearl River

New Town, Tianhe District, Guangzhou, 510623, China

Phone: 86-20-8226-4893 Facsimile: 86-20-8226-4889

Hong Kong

● Shimizu Corporation

Room 1313-1315, Metroplaza, Tower 1, No. 223 Hing Fong

Road, Kwai Fong, N.T., Hong Kong, China

Phone: 852-2582-6888 Facsimile: 852-2827-1918

Taiwan**Taipei**

● Shimizu Corporation

7F-2, No.111, Song Jiang Rd., Zhongshan District, Taipei,

104-86, Taiwan

Phone: 886-2-2517-6580 Facsimile: 886-2-2516-0650

Middle East United Arab Emirates**Dubai**

● Shimizu Corporation

Office 1C 1st Floor Albwardy Building, Bur Dubai, Khalid Bin

Walid Road, P.O.Box 122372, Dubai, UAE

Phone: 971-4-351-5901 Facsimile: 971-4-351-5902

Turkey**Istanbul**

● Shimizu Corporation

Saray Mahallesi, kucuku Caddesi No:64/A, Antasya

Residence Kat:9 No:139 34768 Umraniye, Istanbul Turkey

Phone:90-216-504-7213 Facsimile:90-216-504-7198

Africa**Zambia****Lusaka**

■ Shimizu Corporation

House No.2, One Sunningdale, Stand No. 16847,

off Mwinilunga Road, Sunningdale, Lusaka, Zambia

Phone: 260-976-155-224

Europe**United Kingdom****London**

● Shimizu Corporation

91 Wimpole Street, Marylebone, London W1G 0EF, United

Kingdom

Phone: 44-20-3908-5947

Czech Republic**Prague**

● Shimizu Corporation

Křenova 438/1, 162 00, Praha 6, Czech Republic

Phone: 420-2-3536-6336 Facsimile: 420-2-3536-0302

Poland**Wroclaw**

● Shimizu Corporation

Mikolaja 7, 50-125 Wroclaw, Poland

Phone:48-71-344-3401 Facsimile:48-71-344-1902

Uzbekistan**Tashkent**

● Shimizu Corporation

52, Kuloltuprok Street 100100, Tashkent, Republic of

Uzbekistan

Phone: 998-71-120-7297 Facsimile: 998-71-120-7121

North America U.S.A.**Atlanta**

■ Shimizu North America LLC

1000 Parkwood Circle, Suite 820, Atlanta, GA 30339, U.S.A.

Phone: 1-770-956-1123 Facsimile: 1-770-956-7575

New York

● Shimizu Corporation

■ Shimizu North America LLC

■ Shimizu International Finance (U.S.A), Inc.

155 East 56th street, 4th Floor, New York, NY 10022, U.S.A.

Phone:1-212-223-7757 Facsimile:1-212-223-1930

Mexico**Querétaro**

■ Shimizu North America LLC

Av. Tecnológico Norte #950-B, Piso 15-A, Corporativo Blanco,

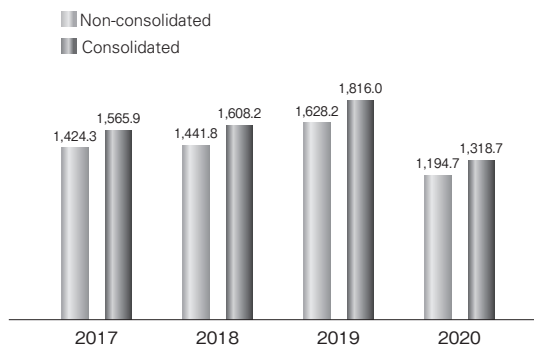
Col. San Pablo, Querétaro, Qro. C.P:76125 MEXICO

Phone: 52-442-189-4160

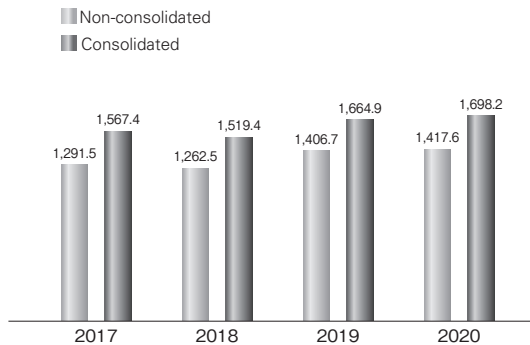
Business Results

(Years ended March 31, 2017 through 2020)

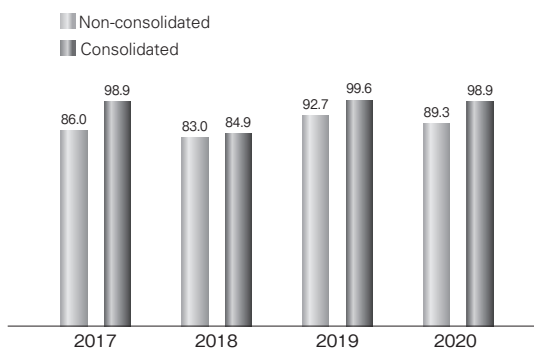
Construction Orders Awarded
(Billions of Yen)



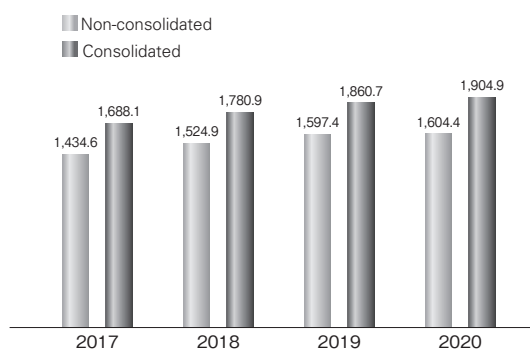
Net Sales
(Billions of Yen)



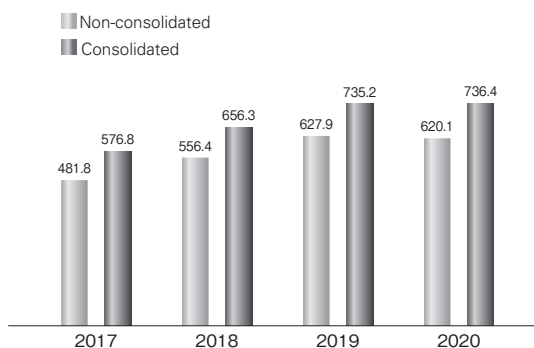
Net Income
(Billions of Yen)



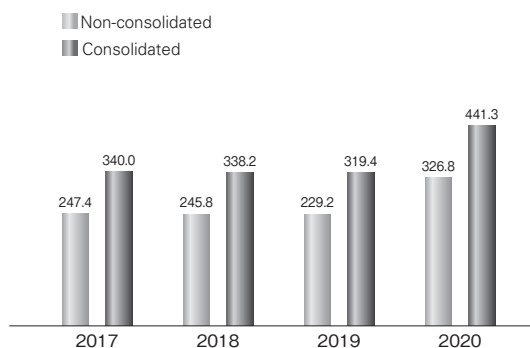
Total Assets
(Billions of Yen)



Net Assets
(Billions of Yen)



Interest-bearing Debt
(Billions of Yen)



Today's Work, Tomorrow's Heritage

