



Corporate Information

Today's Work, Tomorrow's Heritage



A Brief Outline

- Lines of business
- 1 Contracting for building, civil engineering, machinery and other construction works;
 - 2 Research, planning, study, evaluation, diagnosis, soil analysis, surveying, design, supervision, management and consulting in connection with construction works;
 - 3 Research, planning, design, supervision, management and consulting in connection with regional development, urban development, ocean development, space development, resources and energy development, and environment improvement;
 - 4 Purchase, sale, letting, brokerage, management, appraisal and consulting of real estate;
 - 5 Construction, sale, letting and caretaking of residential houses and other kinds of buildings and development and sale of land;
 - 6 Second financial instruments business, investment advisory and agency business under the Financial Instruments and Exchange Law and business under the Real Estate Specific Joint Enterprise Law;
 - 7 Planning, construction, possession, maintenance and operation of public and quasi- public facilities such as municipal and government office buildings, educational and cultural facilities, medical and welfare facilities, roads, harbors, airports, parks, water supply and sewerage facilities and the like;
 - 8 Generation of electrical power and supply of energy such as electricity, heat and the like, and the transfer of emission rights of gases having global warming effect, and consulting in connection therewith;
 - 9 Cultivation of agricultural produce, forestry, cultivation of seafood; processing and sale of products from said operations and management of facilities said operations; and consulting work the above;
 - 10 Undertaking of soil analysis and purification work, collection, disposition, disposal, and reutilization of waste, and consulting therewith;
 - 11 Design, installation, sale, lease, maintenance and consulting of information communication systems, building operation systems;
 - 12 Maintenance and upkeep, security and cleaning of buildings, equipment and machinery;
 - 13 Design, manufacturing, sale, lease and brokerage of construction machinery, construction equipment, mechanical equipment, concrete products for construction, construction materials, wooden fittings for buildings, furniture, decorative wooden interior and wood products;
 - 14 Sales and lease of motor vehicles, office and communication equipment;
 - 15 Acquisition, licensing and sale of industrial property, copyrights, know-how and computer software;
 - 16 Management and consulting of sporting facilities, amusement parks, hotels, restaurants and resort facilities;
 - 17 Sales of pharmaceuticals, medical care materials, medical devices, management and consulting of long-term care facilities, and home nursing care for elderly;
 - 18 Planning, production and sales of advertisements, publications, printing, images of media, and planning, operation and consulting of business events;
 - 19 Transportation, and the management of warehouses and distribution centers;
 - 20 Agency for non-life insurance, agency for life insurance, travel agency and manpower supply agency;
 - 21 Financial business such as loans, guarantees and factoring;
 - 22 Investment and stock investment in business related to the preceding items;
 - 23 Overseas operations in connection with any of the preceding items;
 - 24 Any and all business related to or associated with any of the preceding items.

Paid-in Capital ¥74,365 million (US\$557,419 thousand)
(US\$1=¥133.41/Year ended March 31, 2023)

Annual Sales ¥1,557,325 million (US\$11,673,228 thousand)
(US\$1=¥133.41/Year ended March 31, 2023)

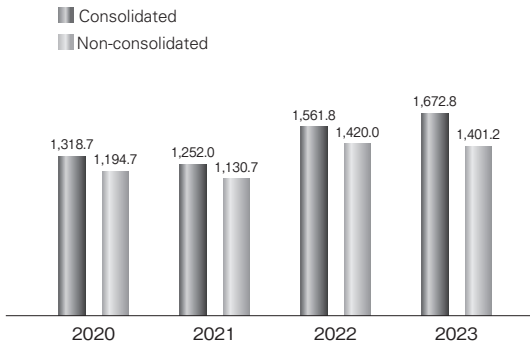
Total Employees 10,845
(As of March 31, 2023)

Doctors of Engineering, Physical Science & Other Subjects	164
Consultant Engineers	828
Licensed First-class Architects	2,053
Licensed First-class Civil Engineers	1,450

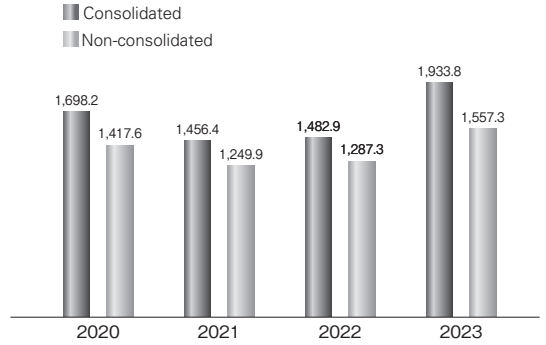
Business Results

(Years ended March 31, 2020 through 2023)

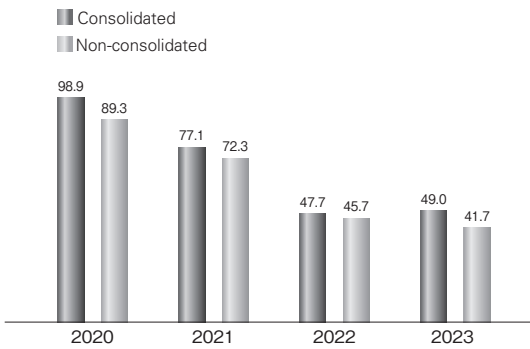
Construction Orders Awarded
(Billions of Yen)



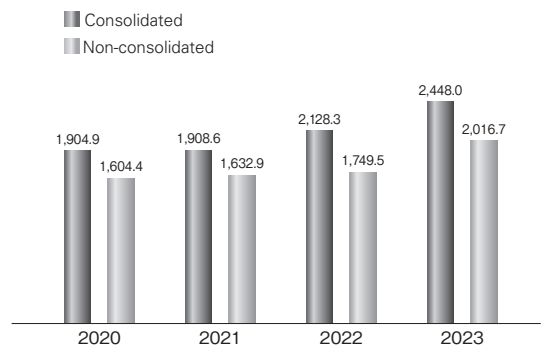
Net Sales
(Billions of Yen)



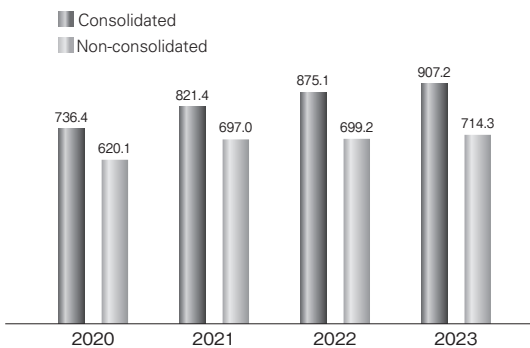
Net Income
(Billions of Yen)



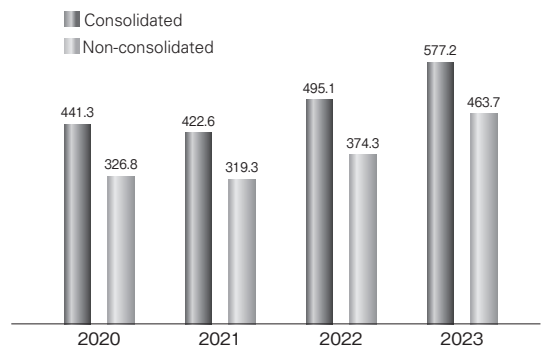
Total Assets
(Billions of Yen)



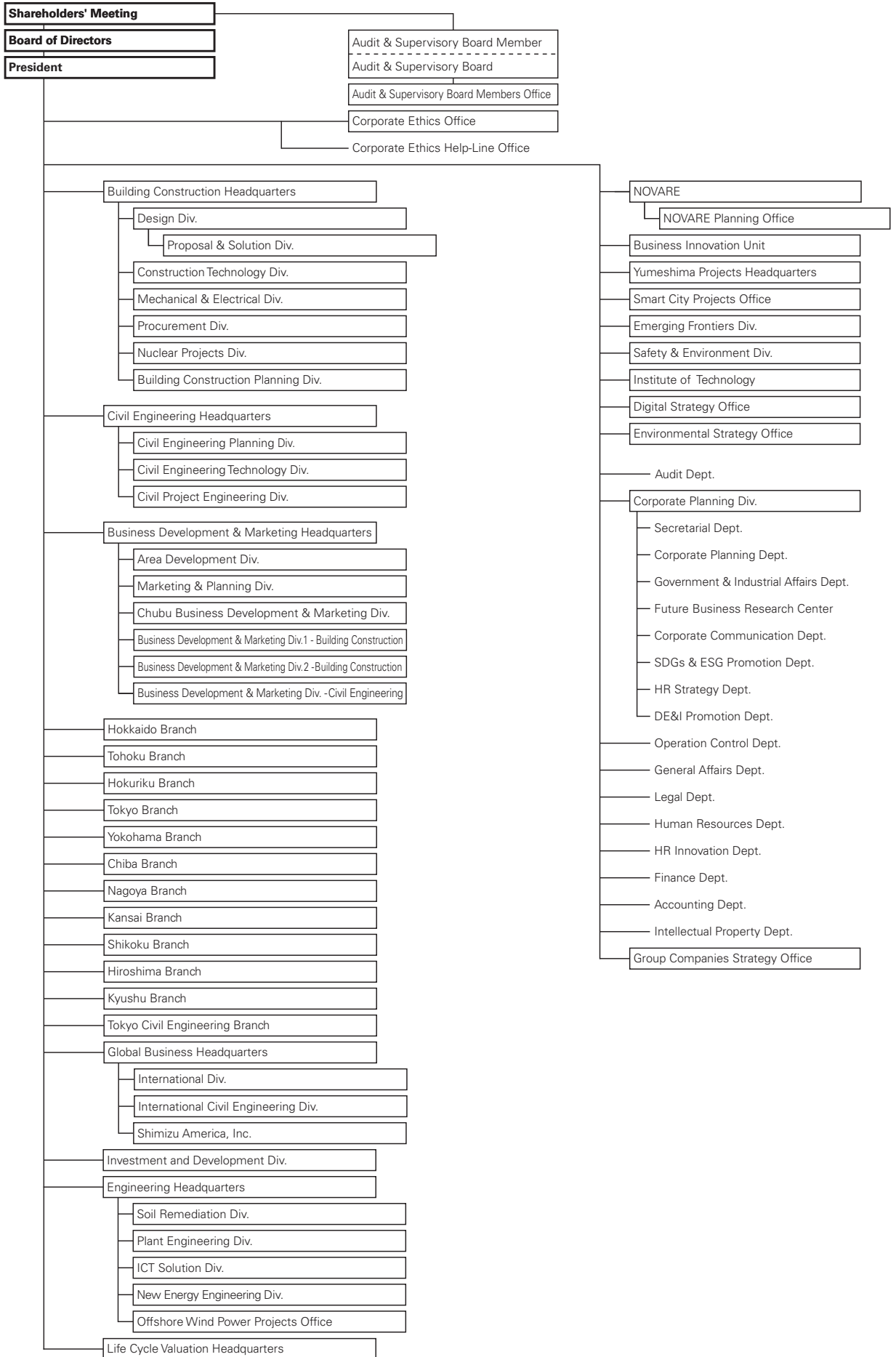
Net Assets
(Billions of Yen)



Interest-bearing Debt
(Billions of Yen)



Corporate Organization



Management

Board of Directors

Chairman of the Board and Representative Director

Yoichi Miyamoto

President and Representative Director

Kazuyuki Inoue

Executive Vice President and Director

Hiroshi Fujimura

Executive Vice President and Representative Director

Kentaro Ikeda

Director

Takeshi Sekiguchi

Representative Director

Yoshiki Higashi

Directors

Noriaki Shimizu

Tamotsu Iwamoto

Junichi Kawada

Mayumi Tamura

Yumiko Jozuka

Note: President and Representative Director Kazuyuki Inoue, Executive Vice President and Director Hiroshi Fujimura, Executive Vice President and Representative Director Kentaro Ikeda, Director Takeshi Sekiguchi, Representative Director Yoshiki Higashi concurrently serve as an Executive Officer.

Director Noriaki Shimizu is a Non-Executive Director and head of the Nomination and Compensation Committee. Directors Tamotsu Iwamoto, Junichi Kawada, Mayumi Tamura and Yumiko Jozuka are outside directors.

Executive Officers

President

Kazuyuki Inoue

Executive Vice Presidents

Hiroshi Fujimura

Kentaro Ikeda

Toru Yamaji

Yoshito Tsutsumi

Senior Managing Officers

Tatsuya Shinmura

Masanobu Onishi

Takeshi Sekiguchi

Takao Haneda

Kouchi Yamashita

Yoshiki Higashi

Akira Yamazaki

Managing Officers

Kojiro Shimizu

Toshihide Suenaga

Mitsuo Morii

Haruhiko Washimi

Takefumi Saito

Nobuhiko Sasaki

Kazuhiko Kato

Hideo Yokoyama

Shinichi Takiguchi

Kazuya Osako

Akinobu Sakao

Toru Noda

Hitoshi Fujita

Executive Officers

Tomoaki Harada

Toshiyuki Nakahara

Naruki Ohashi

Takuya Ito

Mika Kaneko

Takayuki Sakakima

Shuji Kakegawa

Hiroyuki Fujimoto

Yasuhiro Takenaka

Osamu Nakagawa

Fumio Asami

Katsuyoshi Yuhara

Naoki Iwagaki

Yasuhide Yamada

Naomi Onishi

Kenji Tsuzuki

Hiroshi Murata

Toru Aoki

Yoshiro Kobayashi

Kazuyuki Oki

Mitsuhiro Chuman

Nobuyoshi Kikuchi

Mohi U.Ahmed

Kazumi Sato

Shigeru Matsumoto

Michiho Yamaguchi

Audit & Supervisory Board Members

Hideto Watanabe

Koichi Matsuoka

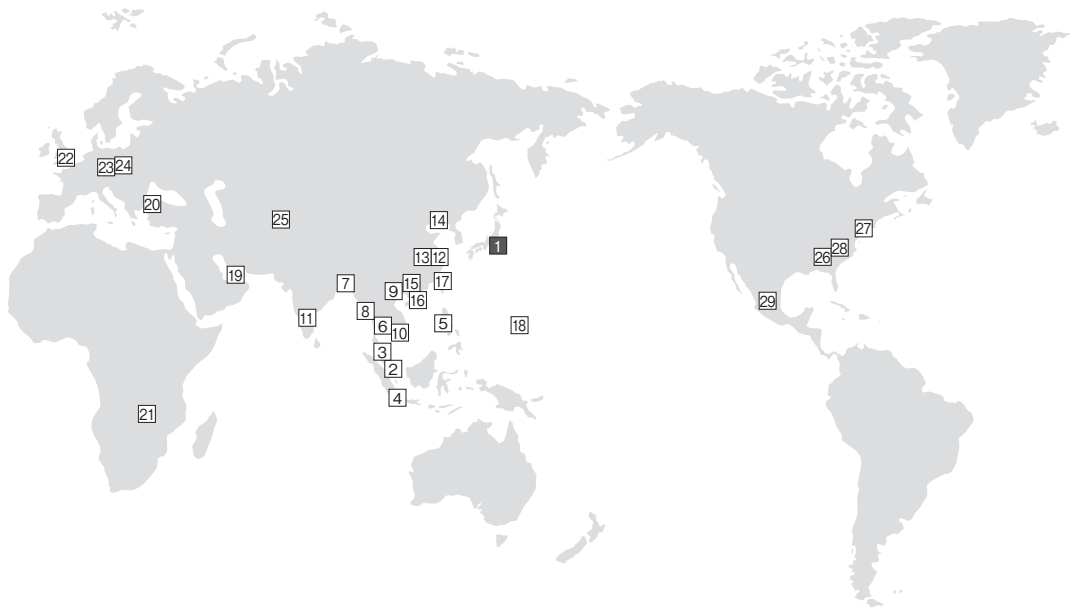
Kaoru Ishikawa

Toshie Ikenaga

Ko Shikata

Note: Audit & Supervisory Board Members Kaoru Ishikawa, Toshie Ikenaga and Ko Shikata are outside auditors.

International Business Network



- | | | | |
|--------------------------|---------------------|--------------|--------------|
| 1 Tokyo
(Head Office) | 8 Yangon | 16 Hong Kong | 24 Wroclaw |
| 2 Singapore | 9 Hanoi | 17 Taipei | 25 Tashkent |
| 3 Kuala Lumpur | 10 Ho Chi Minh City | 18 Guam | 26 Atlanta |
| 4 Jakarta | 11 Bangalore | 19 Dubai | 27 New York |
| 5 Manila | 12 Shanghai | 20 Istanbul | 28 Charlotte |
| 6 Bangkok | 13 Suzhou | 21 Lusaka | 29 Querétaro |
| 7 Dhaka | 14 Dalian | 22 London | |
| | 15 Guangzhou | 23 Prague | |

Domestic Offices

Shimizu Corporation Head Office
No.16-1 Kyobashi 2-chome, Chuo-ku, Tokyo 104-8370, Japan
Phone: 81-3-3561-1111 <https://www.shimz.co.jp/en/>

Branches

Tokyo, Yokohama, Chiba, Osaka, Takamatsu, Sapporo, Sendai, Kanazawa, Nagoya, Hiroshima, Fukuoka

Local Offices (73 locations)

Asia

Singapore

- Shimizu Corporation
 - Shimizu Investment (Asia) Pte. Ltd.
 - Shimizu International Capital (Singapore) Pte. Ltd.
- 8 Kallang Avenue #05-01, Aperia Tower 1, Singapore 339509
Phone: 65-6220-0406

Kuala Lumpur

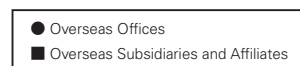
- Shimizu Corporation
- 12-3, 12th Floor, Faber Imperial Court, Jalan Sultan Ismail, 50250 Kuala Lumpur, Malaysia
Phone: 60-3-2070-0000 Facsimile: 60-3-2072-0222

Jakarta

- Shimizu Corporation
 - PT Shimizu Bangun Cipta Kontraktor
- Trinity Tower 51st Fl. Suite 07, 08, 09, 10, 15 dan 16, Jl. H.R. Rasuna Said Kav. C22 Blok IIB, Kec. Setiabudi, Kel. Karet Kuningan, Jakarta 12940, Indonesia
Phone: 62-21-2526-901 Facsimile: 62-21-2526-906

Manila

- Shimizu Corporation
 - Shimizu Philippine Contractors, Inc.
- 5th Floor, King's Court Building I, 2129 Chino Roces Avenue, Makati, Metro Manila, Philippines
Phone: 63-2-8811-2981 Facsimile: 63-2-8811-2985



Bangkok

● Shimizu Corporation

■ Thai Shimizu Co., Ltd.

Unit 2301, 23rd Floor, Empire Tower, 1 South Sathorn Road, Yannawa, Sathorn, Bangkok 10120, Thailand
Phone: 66-2-230-0333 Facsimile: 66-2-230-0303

Dhaka

● Shimizu Corporation

Concord I-K Tower (5th Floor), Plot No. 2, Block CEN(A), North Avenue, Gulshan-2, Dhaka-1212, Bangladesh
Phone: 880-2-5505-2034 Facsimile: 880-2-5505-2036

Yangon

● Shimizu Corporation

No.16-1 Kyobashi 2-chome, Chuo-ku, Tokyo 104-8370, Japan (Global Business Headquarters)
Phone: 81-3-3561-1111

Hanoi

● Shimizu Corporation

■ Shimizu Vietnam Co., Ltd.

3rd Floor, Lang Ha Building, 14 Lang Ha, Ba Dinh District, Hanoi, Vietnam
Phone: 84-24-3772-0500 Facsimile: 84-24-3772-3570

Ho Chi Minh City

● Shimizu Corporation

■ Shimizu Vietnam Co., Ltd.

4th Floor, The Landmark, 5B Ton Duc Thang, District 1, Ho Chi Minh City, Vietnam
Phone: 84-28-3824-1807 Facsimile: 84-28-3824-1809

Bangalore

● Shimizu Corporation

■ Shimizu Corporation India Pvt. Ltd.

G02, Ground Floor, Prestige Sigma, No.03, Vittal Mallya Road, Bangalore 560001, Karnataka, India
Phone: 91-80-4356-7777 Facsimile: 91-80-4356-7778

Shanghai

● Shimizu Corporation

■ Shimizu Corporation (China) Ltd.

Room 2001, No. 4, Lane 255, Dongyu Rd, Pudong District, Shanghai 200126, China
Phone: 86-21-62708800 Facsimile: 86-21-62706600

Suzhou

■ Shimizu Corporation (China) Ltd.

Room2402-2403, Tower B, Wanda Plaza, No.3188, Renmin Road, Suzhou, Jiangsu, China
Phone: 86-512-6272-6070

Dalian

■ Shimizu Corporation (China) Ltd.

c/o Inn Fine Hotel Room 700, 135 Jinma Road, Dalian Economic & Technical Development Zone, Dalian 116600, China
Phone: 86-411-8761-5125/5134

Guangzhou

■ Shimizu Corporation (China) Ltd.

Room 1209, Central Tower, No. 5, Xiancun Road, Zhujiang New Town, Tianhe District, Guangzhou, 510623, China
Phone: :86-20-8527-7160

Hong Kong

● Shimizu Corporation

Room 4313-4322, Metroplaza, Tower 1, No. 223 Hing Fong Road, Kwai Fong, N.T. Hong Kong, China
Phone: 852-2582-6888 Facsimile: 852-2827-1918

Taipei

● Shimizu Corporation

7F-2, No.111, Song Jiang Rd., Zhongshan District, Taipei, 104-86, Taiwan
Phone: 886-2-2517-6580 Facsimile: 886-2-2516-0650

Oceania

Guam

● Shimizu Corporation

Unit 205 Baltej Pavilion, 415 Chalan San Antonio, Tamuning, Guam, 96913
Phone: 1-671-969-1356

Middle East Dubai

● Shimizu Corporation

Office 1C 1st Floor Albwardy Building, Bur Dubai, Khalid Bin Walid Road, P.O.Box 122372, Dubai, UAE
Phone: 971-4-351-5901 Facsimile: 971-4-351-5902

Istanbul

● Shimizu Corporation

Saray Mahallesi, kucuksu Caddesi No:64/A, Antasya Residence Kat:9 No:139 34768 Umraniye, Istanbul Turkey
Phone:90-216-504-7213 Facsimile:90-216-504-7198

Africa

Lusaka

● Shimizu Corporation

House No.2, One Sunningdale, Stand No. 16847, off Mwinilunga Road, Sunningdale, Lusaka, Zambia
Phone: 260-211-267-762

Europe

London

● Shimizu Corporation

91 Wimpole Street, Marylebone, London W1G 0EF, United Kingdom
Phone: 44-20-3908-5947

Prague

● Shimizu Corporation

Křenova 438/1, 162 00, Praha 6, Czech Republic
Phone: 420-2-3536-6336 Facsimile: 420-2-3536-0302

Wroclaw, Poland

● Shimizu Corporation

Mikolaja 7, 50-125 Wroclaw, Poland
Phone:48-71-344-3401 Facsimile:48-71-344-1902

Tashkent

● Shimizu Corporation

99A, Amir Temur Avenue, Yunusabad district, Tashkent, Republic of Uzbekistan
Phone: 81-3-3561-1111

North America Atlanta

■ Shimizu America, Inc.

2100 Riveredge Parkway, Suite 1100, Atlanta, GA, 30328, USA
Phone: 1-770-956-1123 Facsimile: 1-770-956-7575

■ Shimizu North America LLC

2100 Riveredge Parkway, Suite 1100, Atlanta, GA, 30328, USA
Phone: 1-770-956-1123 Facsimile: 1-770-956-7575

New York

● Shimizu Corporation

■ Shimizu North America LLC

■ Shimizu International Finance (U.S.A), Inc.

■ Shimizu Realty Development (U.S.A), Inc.

155 East 56th street, 4th Floor, New York, NY 10022, U.S.A.
Phone:1-212-223-7757 Facsimile:1-212-223-1930

Charlotte

■ Perigon International, Inc.

931 Industrial Drive Matthews, NC 28105, U.S.A.
Phone: 1-704-246-2000

Querétaro, Mexico

■ Shimizu North America LLC Mexico Branch

Av. Tecnológico Norte #950-B, Piso 15-A, Corporativo Blanco, Col. San Pablo, Querétaro, Qro. C.P.76125 MEXICO
Phone: 52-442-189-4160